

# COLUMBIA PUBLIC SCHOOLS NATURE SCHOOL COUNCIL HOUSE

8871 TOM BASS ROAD  
COLUMBIA, MO 65201

OWNER:  
COLUMBIA PUBLIC SCHOOLS

**ARCHITECT:**

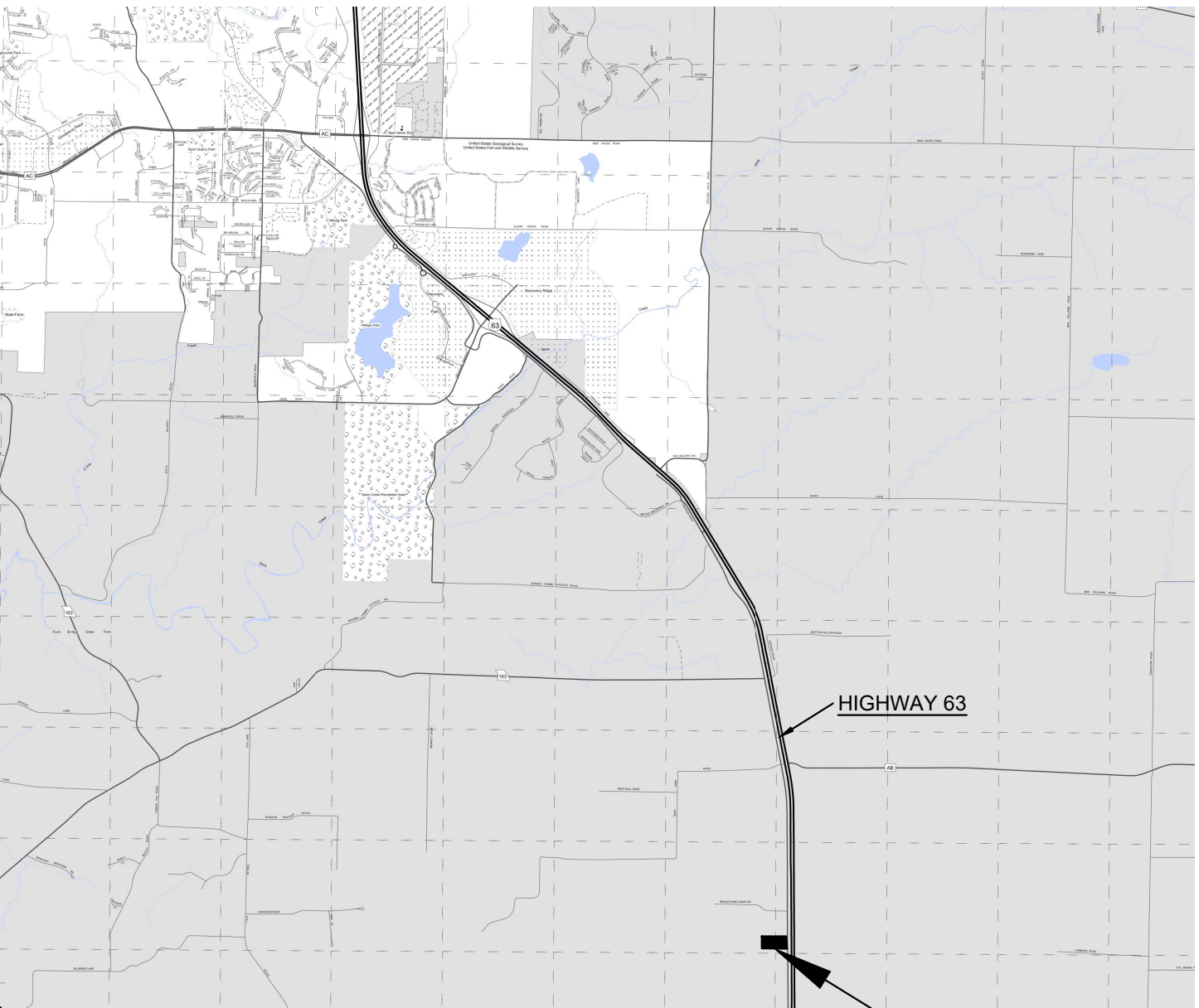
PWARCHITECTS, INC.  
2120 FORUM BLVD., STE. 101  
COLUMBIA, MO 65203  
(573) 449-2683  
(573) 442-6213 FAX

**CIVIL ENGINEER:**

ENGINEERING SURVEYS &  
SERVICES  
1113 FAY STREET  
COLUMBIA, MO 65201  
(573) 449-2646

LARGE SCALE		SMALL SCALE	
CONCRETE			PLAN, SECTION
MISCELLANEOUS ITEMS, AS NOTED ON EACH SHEET			PLAN, SECTION, ELEVATION
ROOF SHINGLES			PLAN, ELEVATION
CONTINUOUS WOOD FRAMING			PLAN, SECTION
WOOD BLOCKING			PLAN, SECTION
PLYWOOD			PLAN, SECTION

**E1 MATERIAL LEGEND**  
SCALE: NTS



**E4 LOCATION MAP**  
SCALE: NTS

DRAWING BULLET WITH NORTH ARROW		GRID REFERENCE
	DRAWING TITLE	ARCH. SCALE
DRAWING BULLET WITHOUT NORTH ARROW		GRID REFERENCE
	DRAWING TITLE	ARCH. SCALE
ELEVATION BULLETS		PLAN/ELEVATION DETAIL BULLET
	GRID REFERENCE	GRID REFERENCE
SCOPE OF WORK BULLET		SHEET NUMBER
	REVISION NOTE BULLET	REVISION NOTE BULLET
	SECTION BULLET	SECTION BULLET
GENERAL NOTE BULLET		GENERAL NOTE BULLET
	NORTH ARROW	NORTH ARROW
BENCHMARK BULLET		COLUMN LINE BULLETS
	000.00' FLOOR	000.00' FLOOR
SPOT ELEV. BULLETS		SPOT ELEV. BULLETS
	TC - TOP OF CURB TG - TOP OF GRADE TW - TOP OF WALL TP - TOP OF PAVING	TC - TOP OF CURB TG - TOP OF GRADE TW - TOP OF WALL TP - TOP OF PAVING

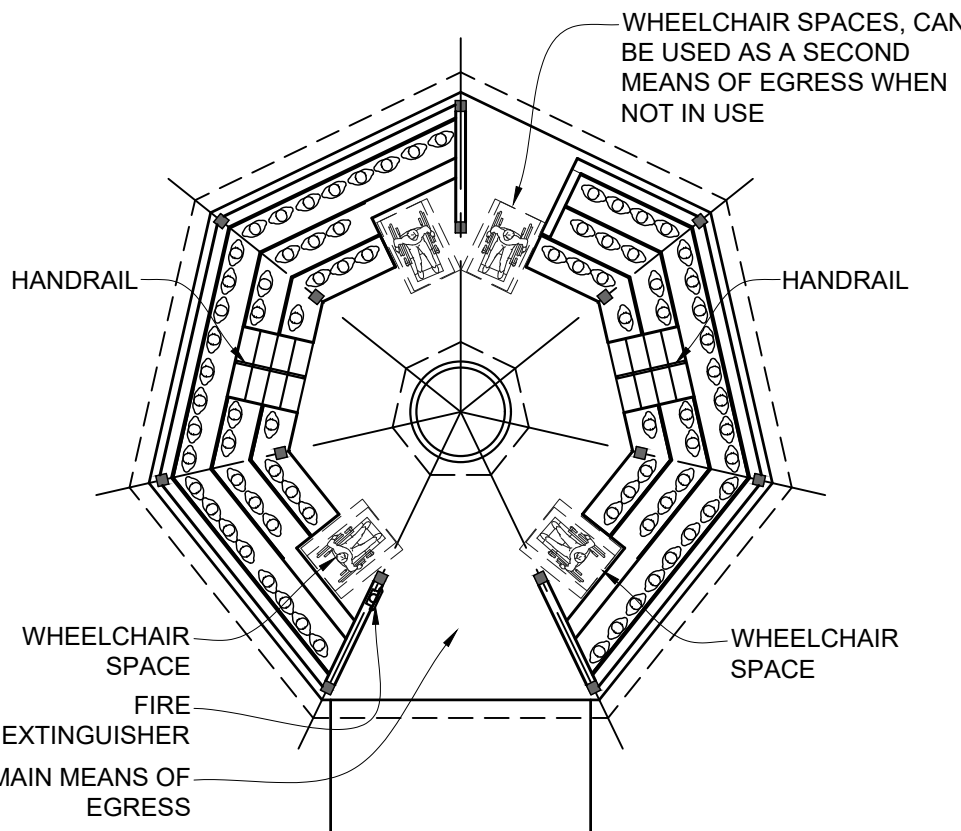
**A1 SYMBOL LEGEND**  
SCALE: NTS

GENERAL	
G-001 - COVER SHEET	
G-002 - SPECIFICATIONS	
G-003 - SPECIFICATIONS	
CIVIL	
C0.01 - COVER	
C1.01 - SITE PLAN	
ARCHITECTURAL	
A101 - PLANS & DETAILS	
A102 - PLANS & DETAILS	
A103 - SECTIONS	
A104 - SECTIONS & DETAILS	

**A5 LIST OF DRAWINGS**  
SCALE: NTS

**SPECIAL INSPECTION NOTE**

UPON COMPLETION OF CONSTRUCTION & PRIOR TO OWNER ACCEPTANCE OF THE PROJECT THE CONTRACTOR SHALL PROVIDE A SPECIAL INSPECTION & WRITTEN REPORT SIGNED BY A REGISTERED PROFESSIONAL ENGINEER IN THE STATE OF MISSOURI VERIFYING COMPLIANCE FOR:  
BUILDING STRUCTURE MUST MEET ADA & ACCESSIBILITY REQUIREMENTS PER CURRENT FEDERAL ADA/ACCESSIBILITY REQUIREMENTS, IBC 2015, ICC 300-2017, AND ICC/ANSI A-117.1 - 2017. AS-BUILT CONFIRMATION TO INCLUDE BUT NOT LIMITED TO: WHEELCHAIR POSITION, TURNING RADIUS, HEIGHT & DEPTH OF SEATING, SLOPE OF CONCRETE SLAB, ETC.



**K13 MEANS OF EGRESS PLAN**  
NOT TO SCALE

**CODE REQUIREMENTS**

CODES:  
IBC 2015, ANSI A117.1-2017, ICC 300-2017

OCCUPANCY: E- EDUCATIONAL  
(602) CONSTRUCTION CLASSIFICATION: V-B

ALLOWABLE BUILDING AREA: 9,500 sf story  
ACTUAL BUILDING AREA: 975 sf  
ALLOWABLE BUILDING HEIGHT: 1 story/ 40'-0"  
ACTUAL BUILDING HEIGHT: 1 story/ 12'-0"

(ICC 300 SECTION 403) OCCUPANT LOAD:  
WHERE BENCH SEATING IS USED, THE NUMBER OF PERSONS SHALL BE BASED ON ONE PERSON FOR EACH 18 INCHES OF LENGTH OF THE BENCH:  
OCCUPANTS ON BENCHES: (LINEAR FT/18")= 80  
WHEELCHAIR SPACES: 4

(IBC 2015 T1108.2.2.1) ACCESSIBLE WHEELCHAIR SPACES:  
CAPACITY OF SEATING IN ASSEMBLY AREAS: 51-100  
MINIMUM REQUIRED NUMBER OF WHEELCHAIR SPACES: 4

(ANSI A117.1 T802.10) WHEELCHAIR SPACE LOCATION DISPERSION:  
TOTAL SEATING IN ASSEMBLY AREAS: UP TO 150  
MINIMUM REQUIRED NUMBER OF WHEELCHAIR SPACE LOCATIONS: 1

(ICC 300 SECTION 307.1) ROOF HEIGHT:  
EXCEPTION: A ROOF CANOPY ABOVE AN OUTDOOR INSTALLATION SHALL BE PERMITTED TO BE LESS THAN 15 FEET ABOVE THE HIGHEST AISLE OR AISLE ACCESSWAY PROVIDED THAT THERE ARE NO OBJECTS LESS THAN 80" ABOVE THE HIGHEST AISLE OR AISLE ACCESSWAY.

(ICC 300 SECTION 404.1) MINIMUM NUMBER OF EXITS:  
OCCUPANT LOAD 0-250= 1 REQUIRED MEANS OF EGRESS

(ICC 300 SECTION 405.2) MINIMUM AISLE WIDTH:  
TWENTY-THREE INCHES BETWEEN AN AISLE STAIR HANDRAIL OR GUARD AND SEATING WHERE THE AISLE HAS A MID-AISLE HANDRAIL.

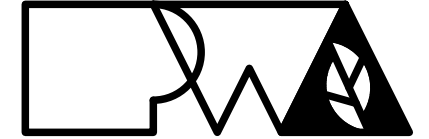
(ICC 300 SECTION 406) AISLE STAIRS:  
406.2 TREAD DEPTH: SHALL BE A MINIMUM OF 11"  
406.4 RISER HEIGHT: RISER HEIGHT SHALL BE NOT LESS THAN 4" NOR MORE THAN 8"

(ICC 300 SECTION 407) AISLE ACCESSWAYS:  
407.4 SINGLE ACCESS: MINIMUM CLEAR WIDTH OF 12" BETWEEN ROWS BUT THE MINIMUM CLEAR WIDTH IS NOT REQUIRED TO EXCEED 22"

(ICC 300 SECTION 409) HANDRAIL:  
409.5.1 MID-AISLE HANDRAIL TERMINATION: MID-AISLE HANDRAILS SHALL NOT EXTEND BEYOND THE LOWEST RISER AND SHALL TERMINATE WITHIN 30" MEASURED HORIZONTALLY, FROM THE FACE OF THE LOWERS RISER. HANDRAIL EXTENSIONS ARE NOT REQUIRED, T303.2 LOADS:  
HANDRAIL SHALL RESIST A LOAD OF 50 POUNDS PER LINEAR FOOT APPLIED IN ANY DIRECTION AT THE TOP. HANDRAIL SHALL RESIST A SINGLE CONCENTRATED LOAD OF 200 POUNDS, APPLIED IN ANY DIRECTION AT ANY POINT ALONG THE TOP.

(ANSI A-117.1 SECTION 903) BENCHES:  
903.5 HEIGHT:  
EXCEPTION: BENCHES PRIMARILY FOR CHILDREN'S USE SHALL BE PERMITTED TO BE 11" MINIMUM AND 17" MAXIMUM ABOVE THE FLOOR, MEASURED TO THE TOP OF THE SEAT.

Copyright Peckham & Wright Architects, Inc. 2020



**PWArchitects, Inc.**  
2120 Forum Blvd., Ste. 101  
Columbia, Missouri 65203  
PWArchitects.com | 573.449.2683  
Peckham & Wright Architects is an Architectural Corporation  
Missouri State Certificate of Authority No. 000244



**COLUMBIA PUBLIC SCHOOLS**  
...AN EXCELLENT EDUCATION FOR ALL STUDENTS

**CPS NATURE SCHOOL  
COUNCIL HOUSE**

8871 TOM BASS ROAD  
COLUMBIA, MO 65201

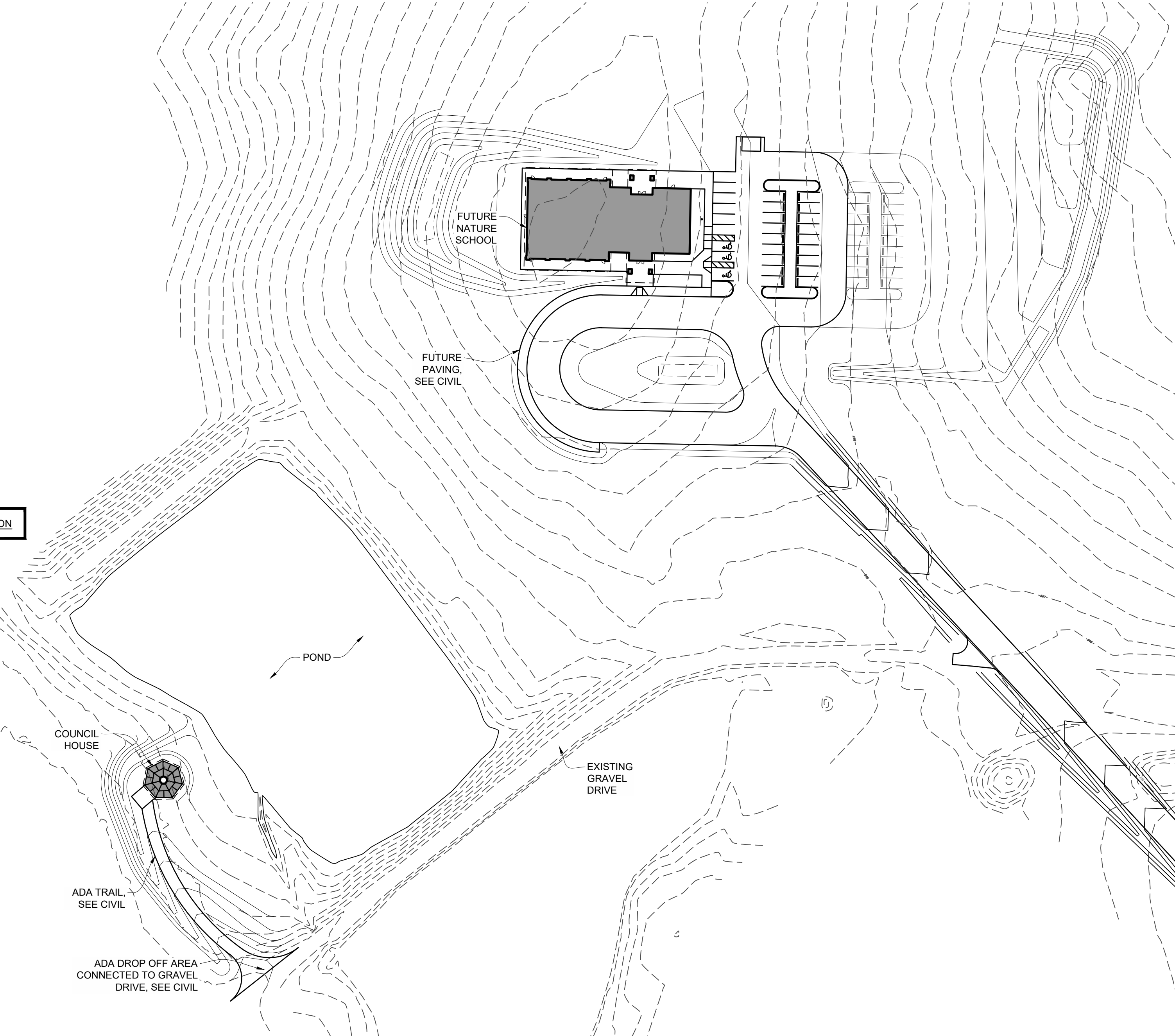
Drawn: HH  
Checked: HH, CD  
Drawing Title: COVER SHEET

Project Number: 201621.54  
CAD File Name (Number): COUNCIL HOUSE2.DWG

No. Revisions: Date:

No.	Revisions	Date

Submission Date: 11/02/2020  
Plot Date: 11/02/2020  
Drawing Number: G001



**A8 SITE PLAN**  
SCALE: 1/64" = 1'-0"







	1	2	3	4	5	6	7	8	9	10	11	12	13	14	15	
	ARCHITECTURAL SPECIFICATIONS (CONT.)															
	DIVISION 6 - WOODS, PLASTICS, AND COMPOSITES (CONTINUED)					DIVISION 7 - WOOD SHINGLES AND SHAKES (CONTINUED)					DIVISION 9 - STAINING & TRANSPARENT FINISHING (CONTINUED)					
M	2.03 CONSTRUCTION PANELS					2.03 SHEET MATERIALS					2.04 ACCESSORY MATERIALS					M
	A. ROOF SHEATHING: T-1-11 12" ON-CENTER PRESSURE TREATED PLYWOOD.					A. EAVE PROTECTION MEMBRANE: ASPHALT-COATED ORGANIC ROLL ROOFING, WITH SMOOTH ASPHALT COATING BOTH SIDES, COMPLYING WITH ASTM D6380/D6380M, TYPE II.					A. ACCESSORY MATERIALS: CLEANING AGENTS, CLEANING CLOTHS, SANDING MATERIALS, AND CLEAN-UP MATERIALS AS REQUIRED FOR FINAL COMPLETION OF FINISHED SURFACES.					
L	1. BOND CLASSIFICATION: EXTERIOR.					B. INTERLAYMENT BETWEEN WOOD SHAKES: ASPHALT-SATURATED ORGANIC ROOFING FELT, UNPERFORATED, COMPLYING WITH ASTM D226/D226M, TYPE II ("NO.30").					B. PATCHING MATERIAL: LATEX FILLER.					
	2. SIZE: 4 FEET WIDE BY 8 FEET LONG.					C. UNDERLAYMENT: ASPHALT-SATURATED ORGANIC ROOFING FELT, UNPERFORATED, COMPLYING WITH ASTM D226/D226M, TYPE II ("NO.30").					C. FASTENER HEAD COVER MATERIAL: LATEX FILLER.					
	3. THICKNESS: PROVIDE 5/8" THICK PANELS.					2.04 METAL FLASHINGS					PART 3 EXECUTION					
	4. EDGE PROFILE: SQUARE EDGE.					A. METAL FLASHINGS: PROVIDE SHEET METAL EAVE EDGE, RIDGE, HIP, AND OTHER FLASHING INDICATED.					A. DO NOT BEGIN APPLICATION OF STAINS AND FINISHES UNTIL SUBSTRATES HAVE BEEN PROPERLY PREPARED. VERIFY THAT SURFACES ARE READY TO RECEIVE WORK AS INSTRUCTED BY THE PRODUCT MANUFACTURER.					
	2.04 ACCESSORIES					1. FORM FLASHINGS TO PROFILES INDICATED ON DRAWINGS.					B. DO NOT APPLY FINISHES UNLESS MOISTURE CONTENT OF SURFACES ARE BELOW 15 PERCENT, MEASURED IN ACCORDANCE WITH ASTM D4442.					
	A. FASTENERS AND ANCHORS:					2. FORM SECTIONS SQUARE AND ACCURATE TO PROFILE, IN MAXIMUM POSSIBLE LENGTHS, FREE FROM DISTORTION OR DEFECTS DETRIMENTAL TO APPEARANCE OR PERFORMANCE.					3.02 PREPARATION					
	1. METAL AND FINISH: HOT-DIPPED GALVANIZED STEEL PER ASTM A 153/A 153M FOR HIGH HUMIDITY AND PRESERVATIVE-TREATED WOOD LOCATIONS, UNFINISHED STEEL ELSEWHERE.					3. HEM EXPOSED EDGES OF FLASHINGS MINIMUM 1/2 INCH (13 MM) ON UNDERSIDE.					A. CLEAN SURFACES THOROUGHLY AND CORRECT DEFECTS PRIOR TO APPLICATION. PREPARE SURFACES USING THE METHODS RECOMMENDED BY THE MANUFACTURER FOR ACHIEVING THE BEST RESULT FOR THE SUBSTRATE UNDER THE PROJECT CONDITIONS. REMOVE OR REPAIR EXISTING FINISHES THAT EXHIBIT SURFACE DEFECTS, REMOVE OR MASK SURFACE APPURTENANCES PRIOR TO PREPARING SURFACES OR FINISHING. SEAL SURFACES THAT MIGHT CAUSE BLEED THROUGH OR STAINING OF TOPCOAT.					
	2.05 FACTORY WOOD TREATMENT					4. COAT CONCEALED SURFACES OF FLASHINGS WITH BITUMINOUS PAINT.					B. WOOD SURFACES TO RECEIVE TRANSPARENT FINISH: WIPE OFF DUST AND GRIT PRIOR TO SEALING. SEAL KNOTS, PITCH STREAKS, AND SAPPY SECTIONS WITH SEALER. FILL NAIL HOLES AND CRACKS AFTER SEALER HAS DRIED, SAND LIGHTLY BETWEEN COATS. PRIME CONCEALED SURFACES WITH GLOSS VARNISH REDUCED 25 PERCENT WITH THINNER.					
	A. PRESERVATIVE TREATMENT:					B. SHEET METAL: PREFINISHED GALVANIZED STEEL, AS SPECIFIED IN DIVISION 7.					3.03 APPLICATION					
	1. MANUFACTURERS:					C. BITUMINOUS PAINT: ACID AND ALKALI RESISTANT TYPE; BLACK COLOR.					A. APPLY PRODUCTS IN ACCORDANCE WITH MANUFACTURER'S WRITTEN INSTRUCTIONS AND RECOMMENDATIONS IN "MPI ARCHITECTURAL PAINTING SPECIFICATION MANUAL". DO NOT APPLY FINISHES TO SURFACES THAT ARE NOT DRY. ALLOW APPLIED COATS TO DRY BEFORE NEXT COAT IS APPLIED.					
	a. ARCH WOOD PROTECTION, INC.; WWW.WOLMANIZEDWOOD.COM.					2.05 ACCESSORIES					B. APPLY EACH COAT TO UNIFORM APPEARANCE IN THICKNESSES SPECIFIED BY MANUFACTURER. SAND WOOD SURFACES LIGHTLY BETWEEN COATS TO ACHIEVE REQUIRED FINISH. VACUUM CLEAN SURFACES OF LOOSE PARTICLES. USE TACK CLOTH TO REMOVE DUST AND PARTICLES JUST PRIOR TO APPLYING NEXT COAT.					
	a. ARCH WOOD PROTECTION, INC.; WWW.WOLMANIZEDWOOD.COM.					A. NAILS: STANDARD ROUND WIRE SHINGLE TYPE, OF HOT DIPPED ZINC COATED STEEL, MINIMUM 7/32 INCH (5.6 MM) DIAMETER HEAD WITH 1-INCH DIAMETER PLASTIC CAP, 0.091 INCH (2.3 MM) DIAMETER SHANK, OF SUFFICIENT LENGTH TO PENETRATE THROUGH ROOF SHEATHING OR 3/4 INCH (19 MM) INTO ROOF SHEATHING OR DECKING.					C. WOOD TO RECEIVE TRANSPARENT FINISHES: TINT FILLERS TO MATCH WOOD. WORK FILLERS INTO THE GRAIN BEFORE SET. WIPE EXCESS FROM SURFACE.					
	a. OSMOSE, INC.; WWW.OSMOSE.COM					B. PLASTIC CEMENT: ASTM D4586/D4586M, ASPHALT ROOF CEMENT.					D. REINSTALL ITEMS REMOVED PRIOR TO FINISHING.					
	2. PRESERVATIVE PRESSURE TREATMENT OF LUMBER ABOVE GRADE: AWPA U1, USE CATEGORY UC3B, COMMODITY SPECIFICATION A USING WATERBORNE PRESERVATIVE TO 0.25 LB/CU FT RETENTION.					C. PRESERVATIVE TREATMENT: DIP TYPE, WATER-BASED, CLEAR, WATER REPELLANT, FUNGUS RESISTANT, DECAY RESISTANT; ACCEPTABLE TO AND APPROVED IN WRITING BY WOOD SHAKE MANUFACTURER.					3.04 CLEANING & PROTECTION					
	a. KILN DRY LUMBER AFTER TREATMENT TO MAXIMUM MOISTURE CONTENT OF 19 PERCENT.					PART 3 EXECUTION					A. COLLECT WASTE MATERIAL THAT COULD CONSTITUTE A FIRE HAZARD, PLACE IN CLOSED METAL CONTAINERS, AND REMOVE DAILY FROM SITE. PROTECT FINISHES UNTIL COMPLETION OF PROJECT. TOUCH-UP DAMAGED FINISHES AFTER SUBSTANTIAL COMPLETION.					
	b. TREAT LUMBER EXPOSED TO WEATHER, OR WATERPROOFING.					3.01 EXAMINATION					1. TERMITE PRETREATMENT: TREAT THE SOIL ADJACENT TO THE FOUNDATION ELEMENTS DURING BACKFILL & TREAT THE GRANULAR FILL UNDERNEATH THE CONCRETE SLAB PRIOR TO POURING THE CONCRETE SLAB WITH TERMITICIDE PER TERMITE TREATMENT MANUFACTURER'S INSTRUCTIONS. PROVIDE OWNER WITH THREE YEAR WARRANTY.					
	d. TREAT LUMBER IN CONTACT WITH MASONRY OR CONCRETE.					A. VERIFY EXISTING CONDITIONS PRIOR TO BEGINNING WORK.										
	e. TREAT LUMBER IN OTHER LOCATIONS AS INDICATED.					B. VERIFY ROOF OPENINGS ARE CORRECTLY FRAMED.										
	PART 3 EXECUTION					C. VERIFY DECK SURFACES ARE DRY, FREE OF RIDGES, WARPS, OR VOIDS.										
	3.01 PREPARATION					D. VERIFY ROOF SLOPE IS NOT LESS THAN 4:12 (1:3).										
	C. COORDINATE INSTALLATION OF ROUGH CARPENTRY MEMBERS SPECIFIED IN OTHER SECTIONS.					2.02 PREPARATION										
	3.02 INSTALLATION - GENERAL					A. VISUALLY INSPECT ALL CONDITIONS INCLUDING BUT NOT LIMITED TO RAFTERS, FASCIA BOARDS, PURLINS, BEAMS, AND COLUMNS PRIOR TO BEGINNING WORK.										
	A. SELECT MATERIAL SIZES TO MINIMIZE WASTE.					B. VERIFY ROOF SLOPE AND CONDITIONS OF PURLINS IS ACCEPTABLE.										
	B. REUSE SCRAP TO THE GREATEST EXTENT POSSIBLE; CLEARLY SEPARATE SCRAP FOR USE ON SITE AS ACCESSORY COMPONENTS, INCLUDING: SHIMS, BRACING, AND BLOCKING.					C. CORRECT ANY DEFECTS FOUND PRIOR TO BEGINNING WORK.										
	C. WHERE TREATED WOOD IS USED ON INTERIOR, PROVIDE TEMPORARY VENTILATION DURING AND IMMEDIATELY AFTER INSTALLATION SUFFICIENT TO REMOVE INDOOR AIR CONTAMINANTS.					D. AT AREAS WHERE EAVE PROTECTION MEMBRANE IS TO BE ADHERED TO SUBSTRATE, COVER KNOT HOLES WITH SHEET METAL.										
	3.03 BLOCKING, NAILERS, AND SUPPORTS					E. BROOM CLEAN DECK SURFACES BEFORE INSTALLING UNDERLAYMENT OR EAVE PROTECTION.										
	A. PROVIDE FRAMING AND BLOCKING MEMBERS AS INDICATED OR AS REQUIRED TO SUPPORT FINISHES, FIXTURES, SPECIALTY ITEMS, AND TRIM.					F. INSTALL EAVE EDGE FLASHINGS TIGHT WITH FASCIA BOARDS. WEATHER LAP JOINTS 2 INCHES (50 MM) AND SEAL WITH PLASTIC CEMENT. SECURE FLANGE WITH NAILS SPACED 6 INCHES (150 MM) ON CENTER.										
	3.04 ROOF-RELATED CARPENTRY					3.03 INSTALLATION, GENERAL										
	A. COORDINATE INSTALLATION OF ROOFING CARPENTRY WITH DECK CONSTRUCTION, FRAMING OF ROOF OPENINGS, AND ROOFING ASSEMBLY INSTALLATION.					A. INSTALL IN ACCORDANCE WITH THIS SPECIFICATION AND THE FOLLOWING, WHICHEVER IS MORE STRINGENT:										
	3.05 INSTALLATION OF CONSTRUCTION PANELS					1. APPLICABLE BUILDING CODE(S).										
	B. WALL SHEATHING: SECURE WITH LONG DIMENSION PERPENDICULAR TO WALL STUDS, WITH ENDS OVER FIRM BEARING AND STAGGERED, USING SCREWS.					2. CSSB (RMAN) - NEW ROOF CONSTRUCTION MANUAL.										
	3.06 CLEANING					3. MANUFACTURER'S INSTRUCTIONS.										
	A. WASTE DISPOSAL:					3.04 INSTALLATION - EAVE PROTECTION MEMBRANE										
	1. COMPLY WITH APPLICABLE REGULATIONS.					A. INSTALL EAVE PROTECTION MEMBRANE FROM EAVE EDGE TO MINIMUM 4 FT (1.2 M) UP-SLOPE BEYOND EDGE OF EAVE.										
	2. DO NOT BURN SCRAP ON PROJECT SITE.					B. APPLY 4 INCH (100 MM) WIDE BAND OF PLASTIC CEMENT OVER DECK FLANGE OF EAVE EDGE FLASHINGS, AND EMBED AN 18 INCH (450 MM) WIDE STRIP OF EAVE PROTECTION MEMBRANE. PLACE STARTER STRIP WITH EAVE EDGE FLUSH WITH FACE OF FLASHINGS. SECURE IN PLACE. LAP ENDS MINIMUM 6 INCHES (150 MM).										
	3. DO NOT BURN SCRAPS THAT HAVE BEEN PRESSURE TREATED.					C. APPLY LAP CEMENT AT RATE OF APPROXIMATELY 1 1/4 GAL/100 SQ FT (0.5 L/SQ M) OVER STARTER STRIP.										
	4. DO NOT SEND MATERIALS TREATED WITH PENTACHLOROPHENOL, CCA, OR ACA TO CO-GENERATION FACILITIES OR "WASTE-TO-ENERGY" FACILITIES.					D. STARTING FROM LOWER EDGE OF STARTER STRIP, LAY ADDITIONAL 36 INCH (900 MM) WIDE STRIPS IN LAP CEMENT, TO PRODUCE A TWO PLY MEMBRANE. WEATHER LAP PLIES MINIMUM 19 INCHES (475 MM) AND NAIL IN PLACE. LAP ENDS MINIMUM 6 INCHES (150 MM). STAGGER END JOINTS OF EACH CONSECUTIVE PLY.										
	B. DO NOT LEAVE ANY WOOD, SHAVINGS, SAWDUST, ETC. ON THE GROUND OR BURIED IN FILL. PREVENT SAWDUST AND WOOD SHAVINGS FROM ENTERING THE STORM DRAINAGE SYSTEM.					3.05 INSTALLATION - UNDERLAYMENT										
	DIVISION 7 - WOOD SHAKES					A. INSTALL UNDERLAYMENT FROM EAVE PROTECTION TO RIDGE.										
	PART 1 GENERAL					B. LAP ENDS MINIMUM 6 INCHES (150 MM).										
	1.01 SECTION INCLUDES					C. APPLY LAP CEMENT AT RATE OF APPROXIMATELY 1 1/4 GAL/100 SQ FT (0.5 L/SQ M) OVER EAVE PROTECTION.										
	A. WOOD SHAKES.					D. STARTING FROM EAVE PROTECTION, LAY ADDITIONAL 36 INCH (900 MM) WIDE STRIPS IN LAP CEMENT, TO PRODUCE A TWO PLY MEMBRANE. WEATHER LAP PLIES MINIMUM 19 INCHES (475 MM) AND NAIL IN PLACE. LAP ENDS MINIMUM 6 INCHES (150 MM). STAGGER END JOINTS OF EACH CONSECUTIVE PLY.										
	B. INSTALLATION ON ROOFS.					3.06 INSTALLATION - INTERLAYMENT										
	C. FLEXIBLE SHEET MEMBRANES FOR EAVE PROTECTION AND INTERLAYMENT BETWEEN SHAKES.					A. AT ROOF SLOPES 4:12 (1:3) AND GREATER: INSTALL INTERLAYMENT IN ACCORDANCE WITH 2018 IBC T1507.1.(2).										
	D. ASSOCIATED METAL FLASHINGS AND ACCESSORIES.					1. INSTALL INTERLAYMENT IN ONE LAYER IN SHINGLE FASHION, PARALLEL TO AND STARTING FROM THE EAVE, AND ENDS AND EDGES WEATHER LAPPED MINIMUM 4 INCHES (100 MM). STAGGER END LAPS OF EACH CONSECUTIVE LAYER OR COURSE. NAIL IN PLACE. WEATHER LAP MINIMUM 4 INCHES (100 MM) OVER EAVE PROTECTION. END LAPS SHALL BE OFFSET BY 6 FEET (1.7 M).										
	2.02 SUBMITTALS					A. ATTACH WITH CORROSION-RESISTANT FASTENERS IN A GRID PATTERN OF 12 INCHES BETWEEN SIDE LAPS AND WITH 6-INCH SPACING AT SIDE AND END LAPS.										
	A. SEE DIVISION 1 GENERAL REQUIREMENTS- ADMINISTRATIVE REQUIREMENTS, FOR SUBMITTAL PROCEDURES.					3. REFER TO PARAGRAPH 2.05 ACCESSORIES ABOVE FOR FASTENER (NAIL) REQUIREMENTS.										
	B. PRODUCT DATA: PROVIDE DATA INDICATING MATERIAL CHARACTERISTICS, PERFORMANCE CRITERIA, AND LIMITATIONS.					B. ITEMS PROJECTING THROUGH OR MOUNTED ON ROOF: WEATHER LAP AND SEAL WATERTIGHT WITH PLASTIC CEMENT.										
	C. MANUFACTURER'S INSTRUCTIONS: INDICATE INSTALLATION CRITERIA AND PROCEDURES.					3.07 INSTALLATION - METAL FLASHING AND ACCESSORIES										
	D. MANUFACTURER'S CERTIFICATE: CERTIFY THAT PRODUCTS MEET OR EXCEED SPECIFIED REQUIREMENTS.					A. INSTALL FLASHINGS IN ACCORDANCE WITH CSSB (RMAN) - NEW ROOF CONSTRUCTION MANUAL.										
	E. MAINTENANCE MATERIALS: FURNISH THE FOLLOWING FOR OWNER'S USE IN MAINTENANCE OF PROJECT.					B. WEATHER LAP JOINTS MINIMUM 2 INCHES (50 MM) AND SEAL WEATHER TIGHT WITH PLASTIC CEMENT.										
	1. SEE DIVISION 1 GENERAL REQUIREMENTS - PRODUCT REQUIREMENTS, FOR ADDITIONAL PROVISIONS.					C. SECURE IN PLACE WITH NAILS AT 6 INCHES (150 MM) ON CENTER. CONCEAL FASTENINGS.										
	2. SHAKES: 50 SQ FT (4.65 SQ M) OF EACH TYPE, SIZE, AND SHAPE.															

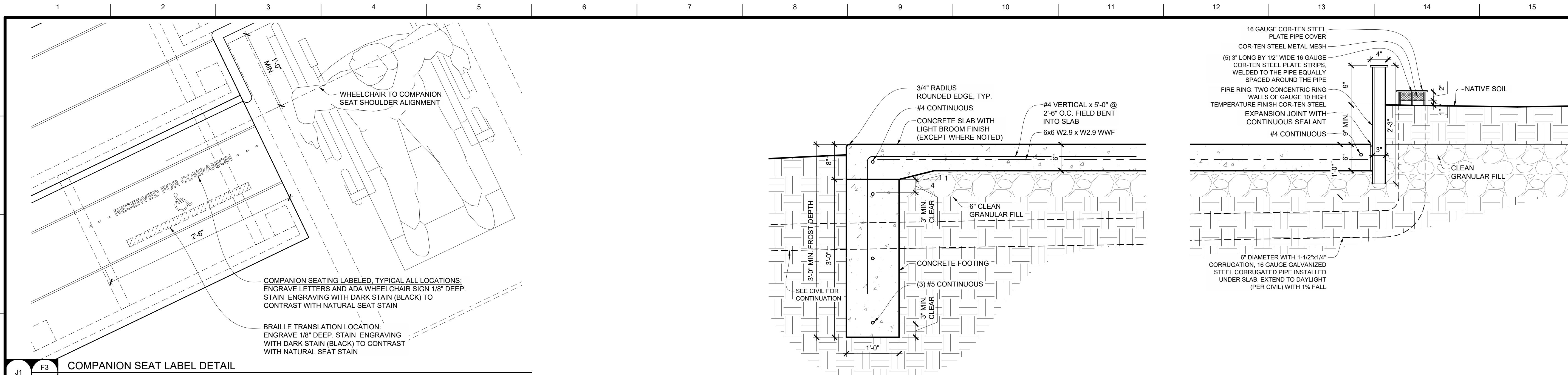












**COMPANION SEAT LABEL DETAIL**  
SCALE: 1 1/2" = 1'-0"

**FOOTING DETAIL**  
SCALE: 1" = 1'-0"

**FOOTING DETAIL**  
SCALE: 1" = 1'-0"

**MATERIAL LEGEND**

WOOD FINISH (STAIN 1)  
BEHR OR EQUAL  
STYLE: BEHR PREMIUM TRANSPARENT  
WATERPROOF WOOD FINISH  
COLOR: NATURAL 500/400  
LOCATION: EXPOSED PLYWOOD,  
HORIZONTAL SEATS, GUARD WALL  
CAP, VERTICAL PANEL SIDING, ETC.

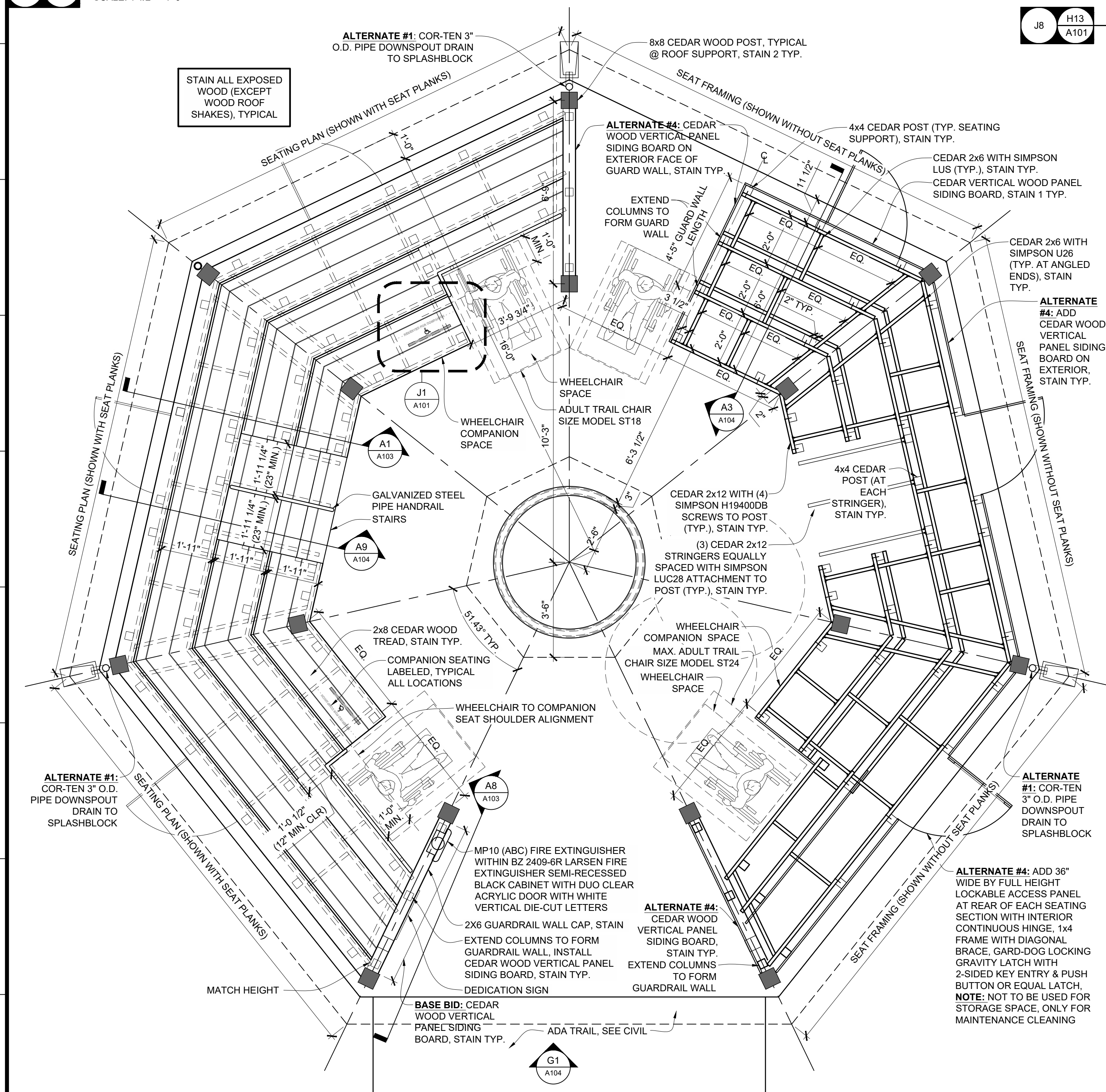
WOOD FINISH (STAIN 2)  
BEHR OR EQUAL  
STYLE: BEHR PREMIUM TRANSPARENT  
WATERPROOF WOOD FINISH  
COLOR: CHOCOLATE T-129  
LOCATION: ROOF FRAMING MEMBERS,  
BEAMS, COLUMNS, BRACKETS, AND  
SEAT BACKS

PRE-FINISHED BREAK METAL & DRIP EDGE  
STEEL FLASHING  
COLOR: BLACK

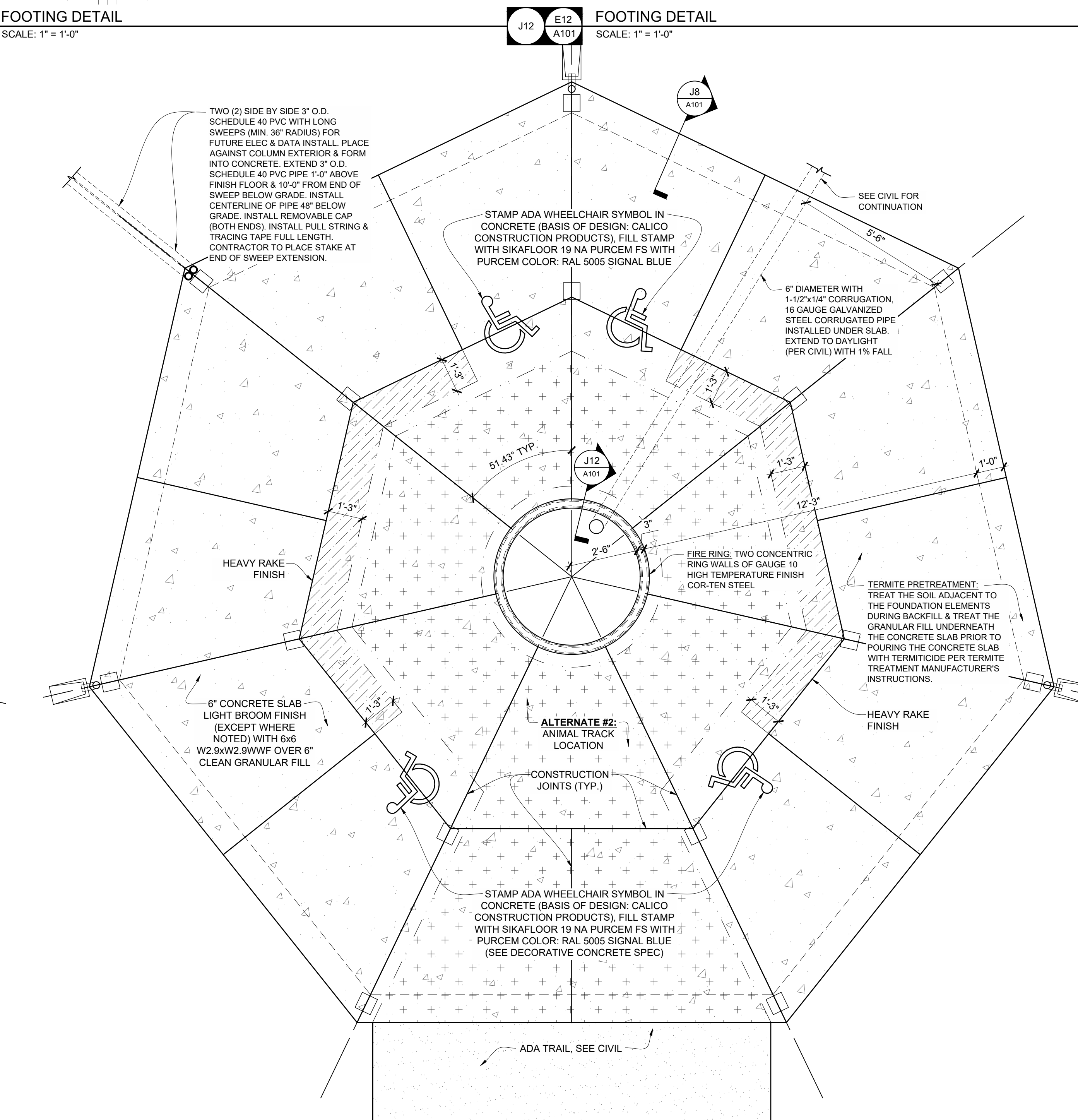
CONCRETE WITH LIGHT  
BROOM FINISH

CONCRETE WITH  
HEAVY RAKE FINISH

**ALTERNATE #2:** CONCRETE  
WITH ANIMAL TRACKS:  
OWNER/MDC WILL PROVIDE  
RESIN TRACKS; ACTUAL  
APPLICATION SHOULD BE  
COORDINATED WITH MDC  
STAFF ON SITE DAY OF  
APPLICATION



**FLOOR PLAN**  
SCALE: 3/8" = 1'-0"



**FOUNDATION PLAN**  
SCALE: 3/8" = 1'-0"

Copyright Peckham & Wright Architects, Inc. 2020

**Peckham & Wright Architects, Inc., d.b.a. PWArchitects, Inc.**  
2120 Forum Blvd., Ste. 101  
Columbia, Missouri 65203  
PWArchitects.com | 573.449.2883  
Peckham & Wright Architects is an Architectural Corporation  
Missouri State Certificate of Authority No. 000244

STATE OF MISSOURI  
HEIDI MARIE  
HYLAND  
ARCHITECT  
11/02/2020

**COLUMBIA PUBLIC SCHOOLS**  
...AN EXCELLENT EDUCATION FOR ALL STUDENTS

**CPS NATURE SCHOOL  
COUNCIL HOUSE**

8871 TOM BASS ROAD  
COLUMBIA, MO 65201

Drawn: HH  
Checked: HH, CD  
Drawing Title: PLANS & DETAILS

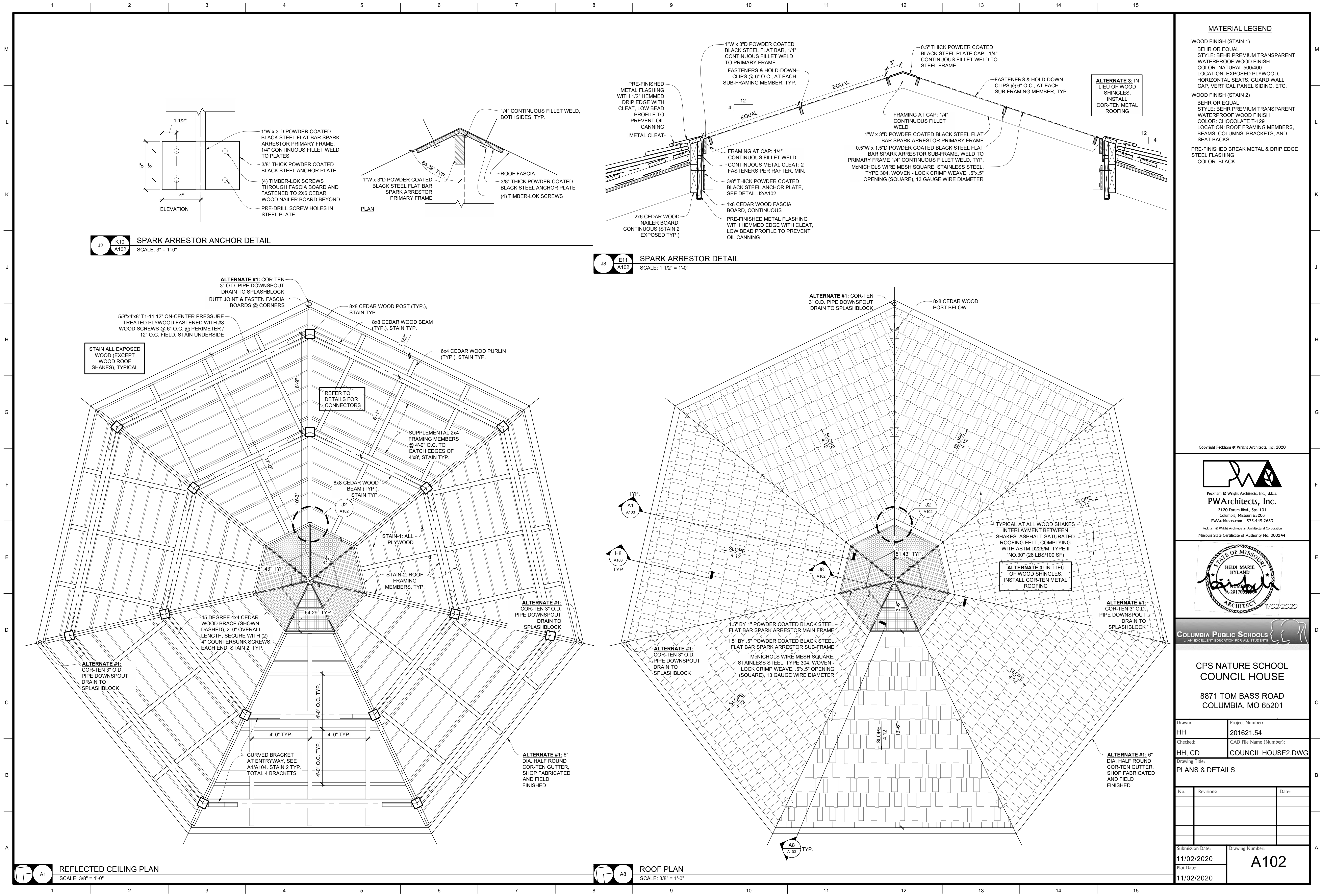
Project Number: 201621.54  
CAD File Name (Number): COUNCIL HOUSE2.DWG

No. Revisions: Date:

Submission Date: 11/02/2020  
Plot Date: 11/02/2020

Drawing Number: A101





MATERIAL LEGEND	
WOOD FINISH (STAIN 1)	BEHR OR EQUAL STYLE: BEHR PREMIUM TRANSPARENT WATERPROOF WOOD FINISH COLOR: NATURAL 500/400 LOCATION: EXPOSED PLYWOOD, HORIZONTAL SEATS, GUARD WALL CAP, VERTICAL PANEL SIDING, ETC.
WOOD FINISH (STAIN 2)	BEHR OR EQUAL STYLE: BEHR PREMIUM TRANSPARENT WATERPROOF WOOD FINISH COLOR: CHOCOLATE T-129 LOCATION: ROOF FRAMING MEMBERS, BEAMS, COLUMNS, BRACKETS, AND SEAT BACKS
PRE-FINISHED BREAK METAL & DRIP EDGE STEEL FLASHING COLOR: BLACK	

Copyright Peckham & Wright Architects, Inc. 2020



Peckham & Wright Architects, Inc., d.b.a.  
**PWArchitects, Inc.**  
2120 Forum Blvd., Ste. 101  
Columbia, Missouri 65203  
PWArchitects.com | 573-449-2683  
Peckham & Wright Architects is an Architectural Corporation  
Missouri State Certificate of Authority No. 000244



STATE OF MISSOURI  
HEIDI MARIE  
HYLAND  
ARCHITECT  
11/02/2020

COLUMBIA PUBLIC SCHOOLS  
...AN EXCELLENT EDUCATION FOR ALL STUDENTS

CPS NATURE SCHOOL  
COUNCIL HOUSE  
  
8871 TOM BASS ROAD  
COLUMBIA, MO 65201

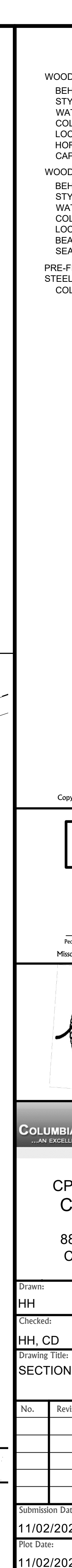
Drawn:	Project Number:
HH	201621.54
Checked:	CAD File Name (Number):
HH, CD	COUNCIL HOUSE2.DWG

Drawing Title:  
PLANS & DETAILS

No.	Revisions:	Date:

Submission Date:	Drawing Number:
11/02/2020	A102
Plot Date:	
11/02/2020	





Submission Date:	Drawing Number: <b>A103</b>
11/02/2020	
Plot Date:	
11/02/2020	

Submission Date:	Drawing Number: <b>A103</b>
11/02/2020	
Plot Date:	
11/02/2020	



