

The aerial site plan shows the University of Utah campus with topographic contours and existing infrastructure. A new building complex is highlighted in black, consisting of a long, narrow structure and a larger, more complex structure to its south. A callout line points from the label 'A8 A101' to the northern part of the new building. Another callout line points from the label 'MAIN ENTRY' to the southern part of the new building. The plan also shows surrounding streets, including Aggrin St to the north and N West Blvd to the east. Other labels include 'Aggrin St', 'N West Blvd', 'A8 A101', and 'MAIN ENTRY'.

SITE - BUILDING PLAN
SCALE: 1" = 50'-0"

SYMBOL LEGEND

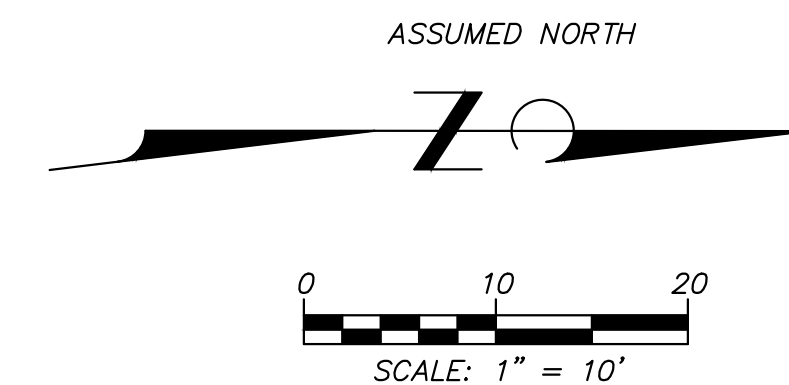
SCALE: NTS

F13 MATERIAL LEGEND
SCALE: NTS



AREA MAP
SCALE: N.T.S.

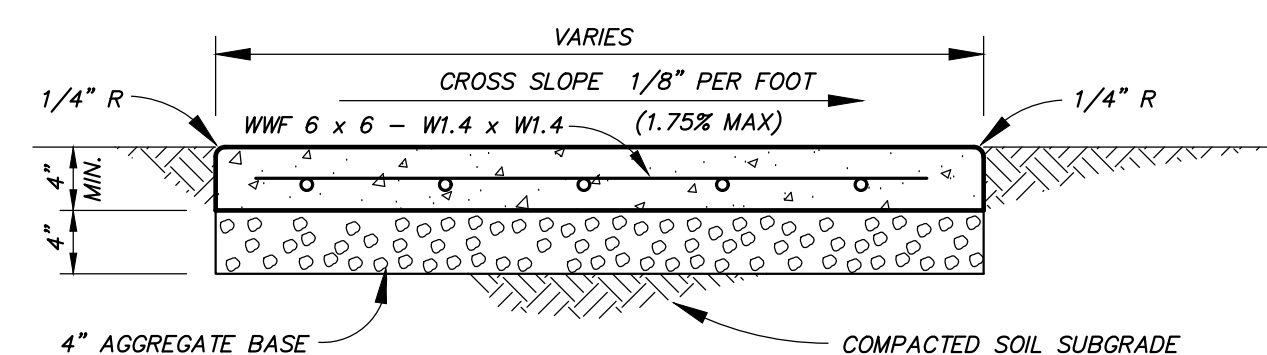
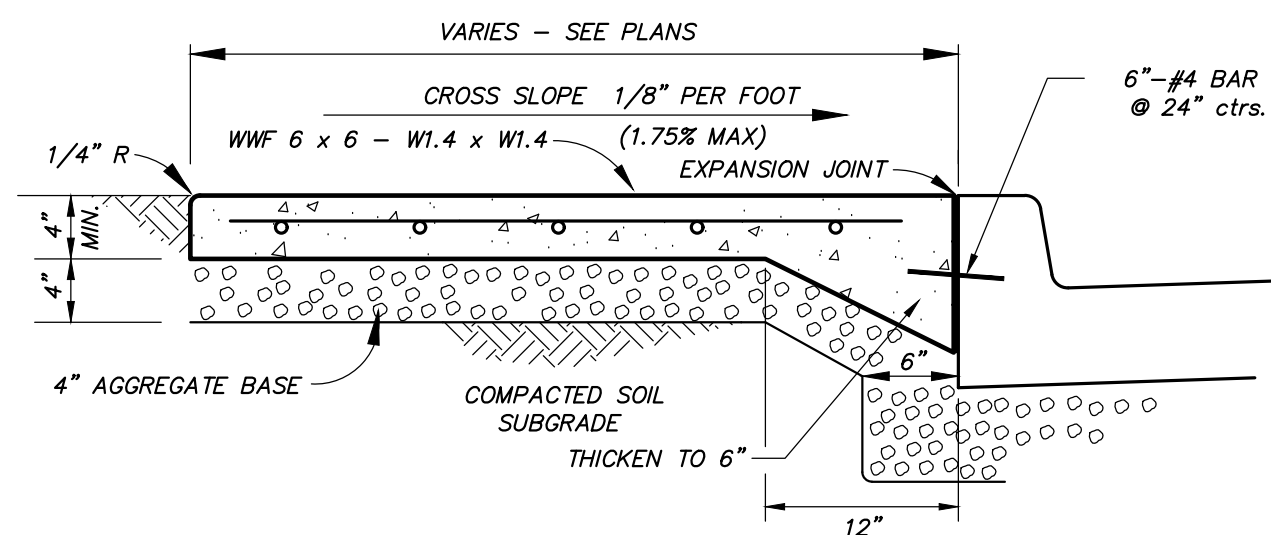
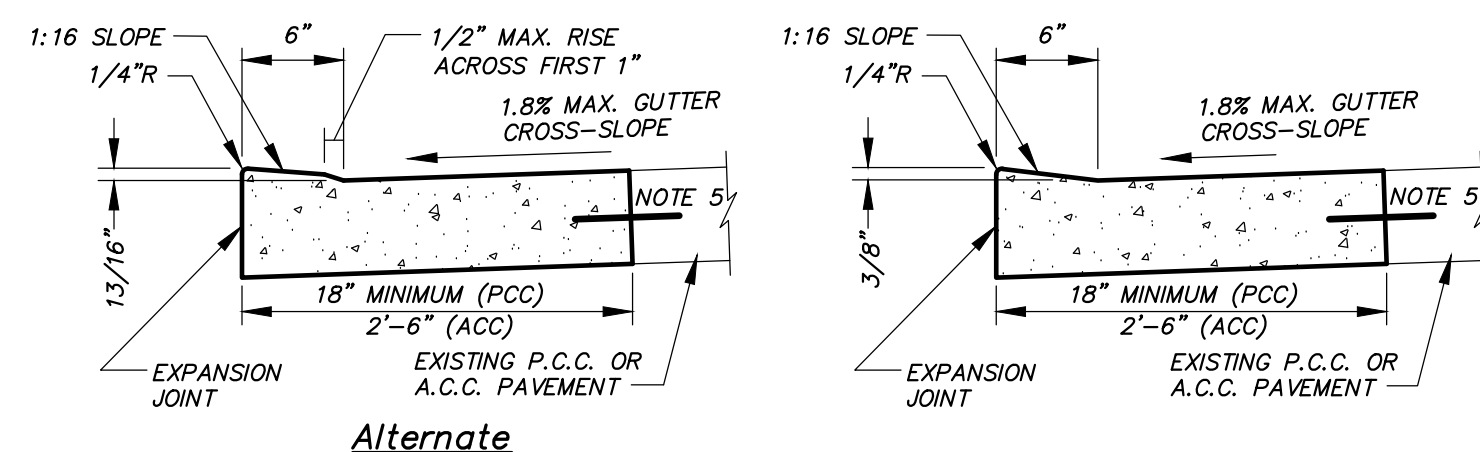
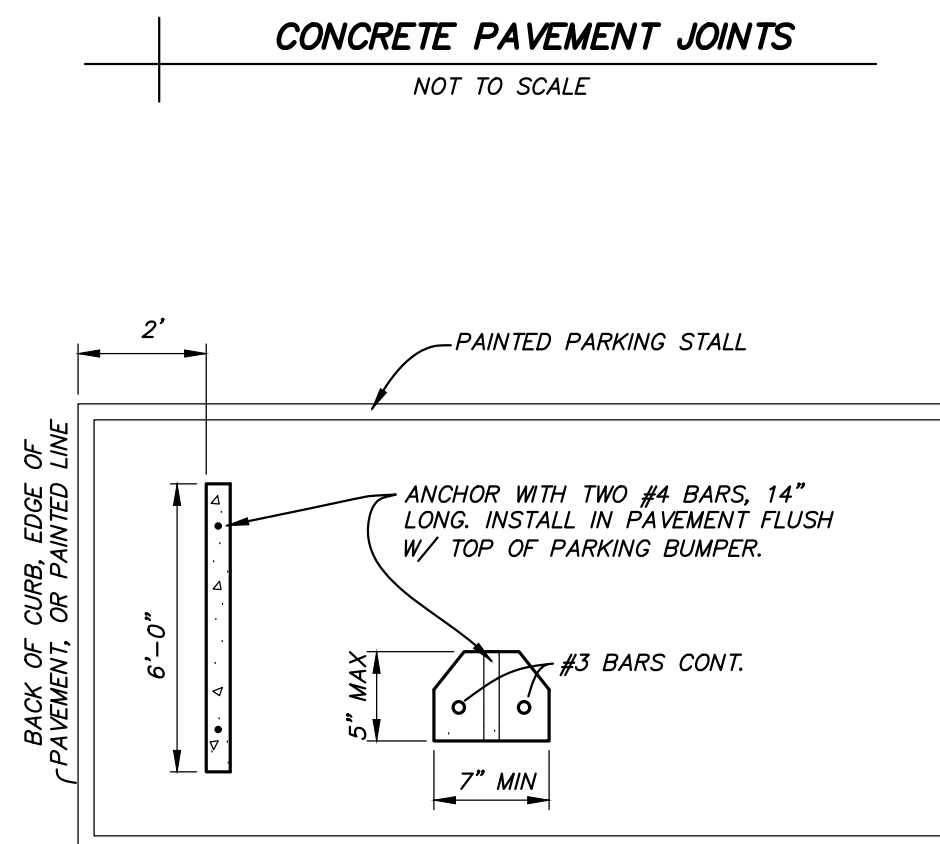
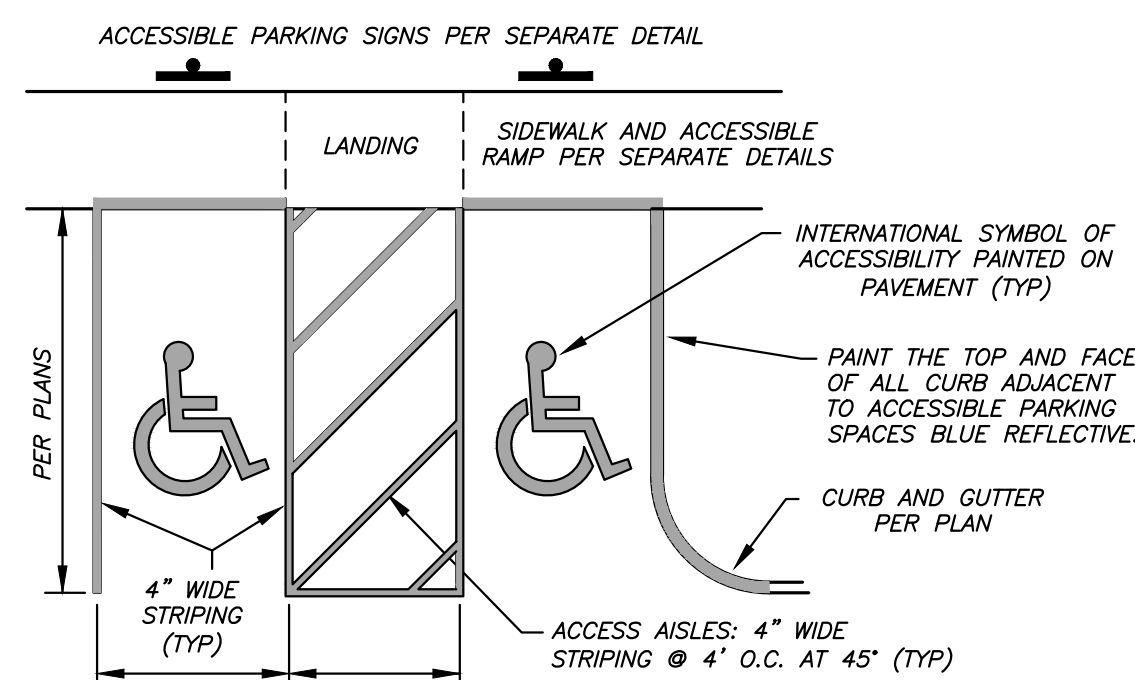
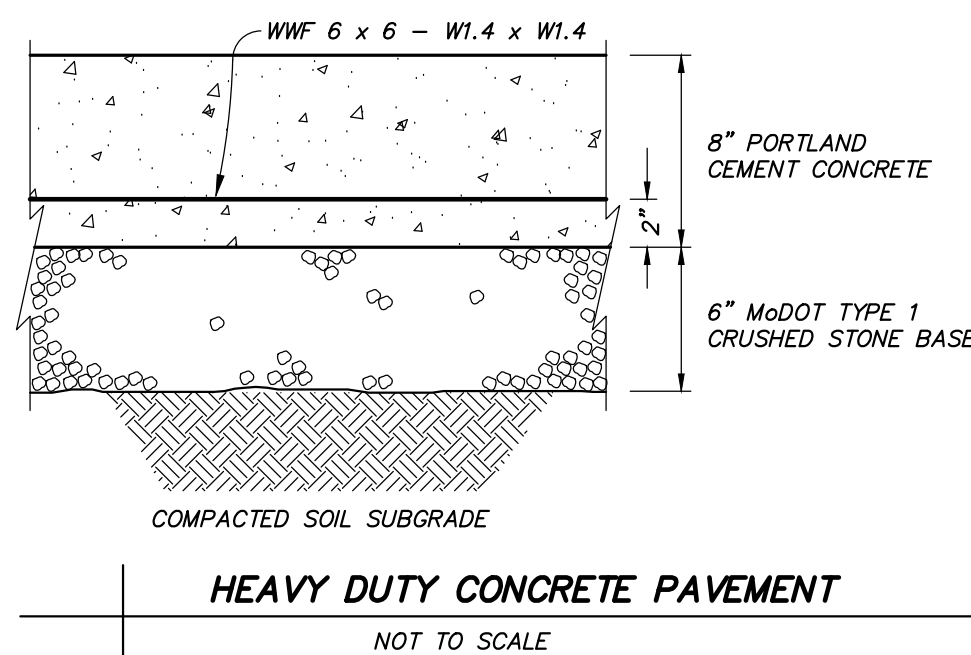
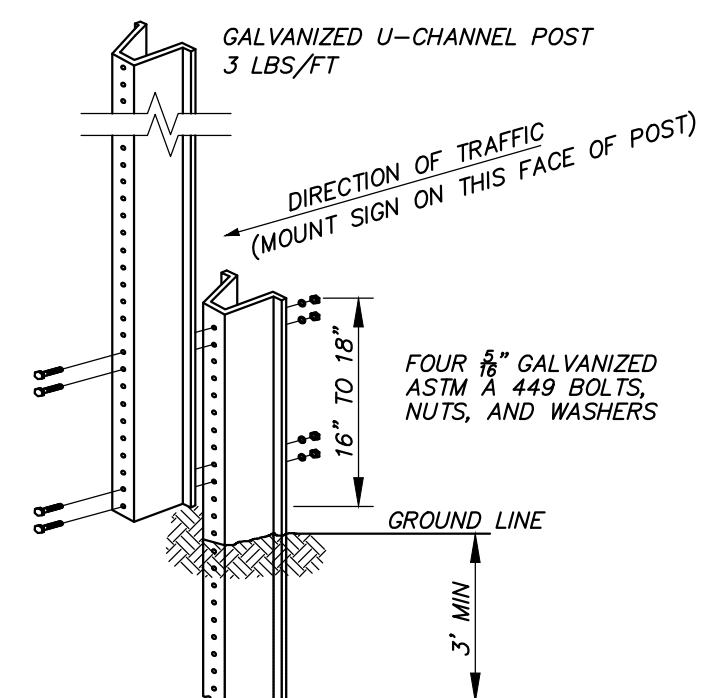
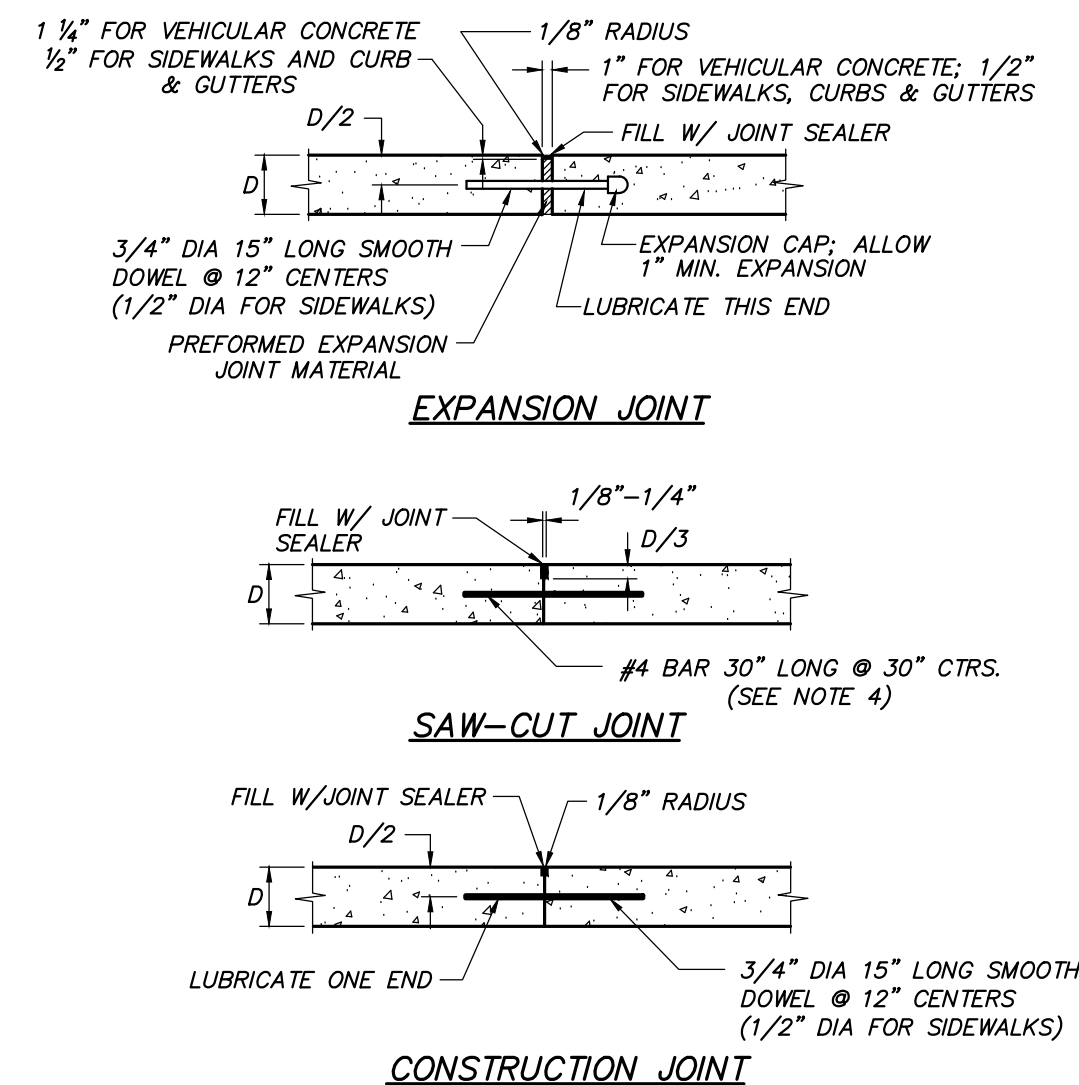
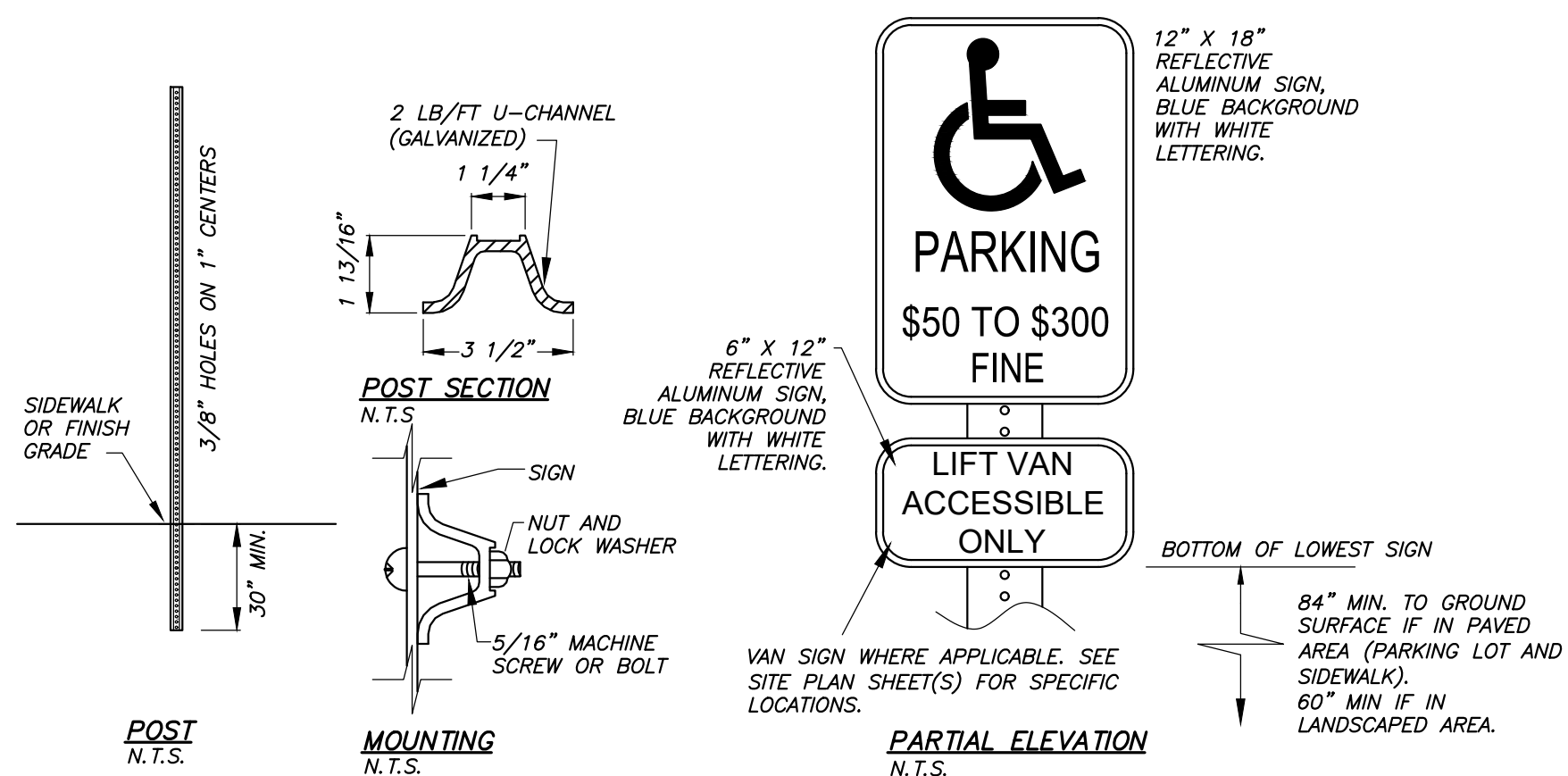
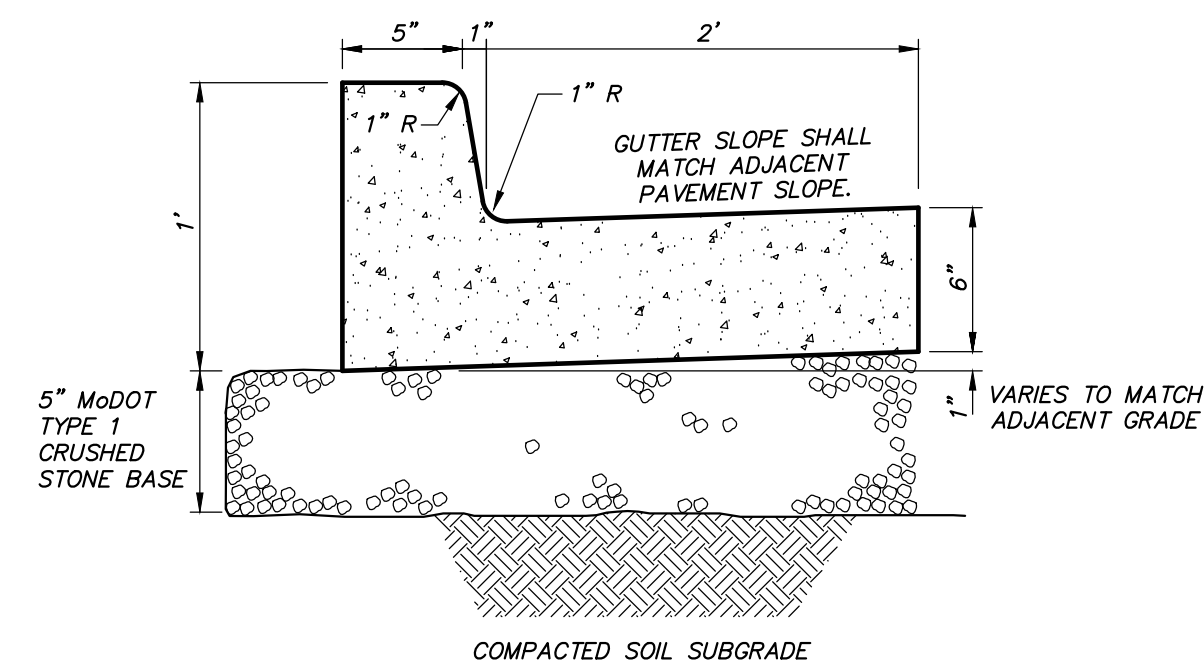
Submission Date:	Drawing Number:
3/25/2021	G001
Plot Date:	
03/23/2021	



CONCRETE POUR SCHEDULE

- NOTES:
1. EXPANSION JOINTS AROUND ALL STRUCTURES ARE NOT INDICATED, BUT STILL REQUIRED. SEE CONCRETE PAVEMENT JOINTS DETAIL.

Submission Date: 3/25/2021	Drawing Number: C1.01
Plot Date: 3/25/2021	



F:\CURRENTDRAWINGS\PECKHAM\S14919\14919 SITE PLAN.DWG 3/23/2021

3/25/2023

STATE OF MISSOURI
ZACHARY
KARIS THOMAS
NUMBER
PE-2004017256
PROFESSIONAL PEER

Zachary K. Thomas

ZACHARY K. THOMAS
PROFESSIONAL ENGINEER
PE-2004017256

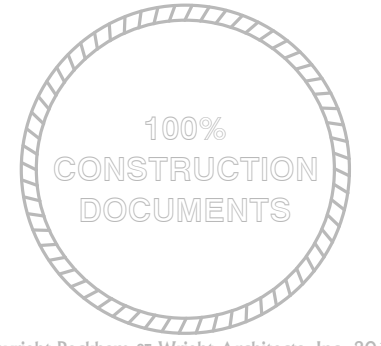
IF ORIGINAL SIGNATURE OR DIGITAL
AUTHENTICATION IS NOT PRESENT THIS
MEDIA SHOULD NOT BE CONSIDERED A
CERTIFIED DOCUMENT.



Engineering Surveys & Services
1113 Fay Street, Columbia, Missouri 65201
573 - 449 - 2646 | www.ess-inc.com
Missouri Engineering Corporation # 2004005018
ES&S JOB NO. 14919



Peckham & Wright Architects, Inc., d.b.a.
PWArchitects, Inc.
 2120 Forum Blvd., Ste. 101
 Columbia, Missouri 65203
 PWArchitects.com | 573.449.2683
 Peckham & Wright Architects an Architectural Corporation
 Missouri State Certificate of Authority No. 000244



Copyright Peckham & Wright Architects, Inc. 2019

COLUMBIA PUBLIC SCHOOLS
...AN EXCELLENT EDUCATION FOR ALL STUDENTS

SECURITY AND ADA MAIN
ENTRANCE AT WEST BOULEVARD
ELEMENTARY
319 WEST BLVD N
COLUMBIA, MO 65203

Drawn:	Project Number:
BR	201621.55

Checked:	CAD File Name (Number):
ZT	

Drawing Title:
DETAILS

No.	Revisions:	Date:

Submission Date: 3/25/2021	Drawing Number: C2.01
Plot Date: 3/25/2021	

1

2

3

4

5

6

7

8

9

10

11

12

13

14

15

MAIN
OFFICE

25
(BRAILLE HERE)

RAISED LETTERING
WITH CONTRASTING
BACK GROUND (TYP.)
2 COLOR WITH
BORDER

SIGNAGE

1'-6"

1'-6"

THE BASELINE OF THE
TACTILE COPY CAN BE
MOUNTED BETWEEN 48"
AT THE LOWEST POINT
TO 60" AT THE HIGHEST
POINT

9"

48"

60" MAX.

DOOR SCHEDULE

FRAME SCHEDULE

Details

HDWR

No.

Location

Door Leaf Size (WxH)

Material

GLAZING

Material

Hardware Group

Thickness

Door Elevation

Wood

F.R.P.

Aluminum/glass

Hollow Metal

BALLISTIC

FIRE RATED

INSULATED

1/4" TEMPERED

Frame Elevation

Wood

Hollow Metal

Aluminum

1/4" TEMPERED

Insulated Glass

Head

Jamb

Threshold

01

VESTIBULE

EXISTING PAIR 3'-0" x 7'-0"

1-3/4"

-

A

A

01

A

I

F10/A103

F4-F7/A103

F4/A103

1

02

VESTIBULE

EXISTING PAIR 3'-0" x 7'-0"

1-3/4"

-

A

A

02

A

I

F10/A103

F4-F7/A103

F4/A103

1

03

OFFICE

3'-2" x 7'-0"

2-1/2"

03

A

B

B

03

A

T

K10/A102

K6/A102

K1-K4/A102

2

04

VESTIBULE

EXISTING PAIR 3'-0" x 7'-0"

1-3/4"

-

A

A

T

-

A

T

A9/A102

L4/A102

L1/A102

1

05

VESTIBULE

EXISTING PAIR 3'-0" x 7'-0"

1-3/4"

-

A

A

-

-

A

T

-

-

-

1

06

OFFICE

3'-0" x 7'-0"

1-3/4"

05

W

T

-

HM

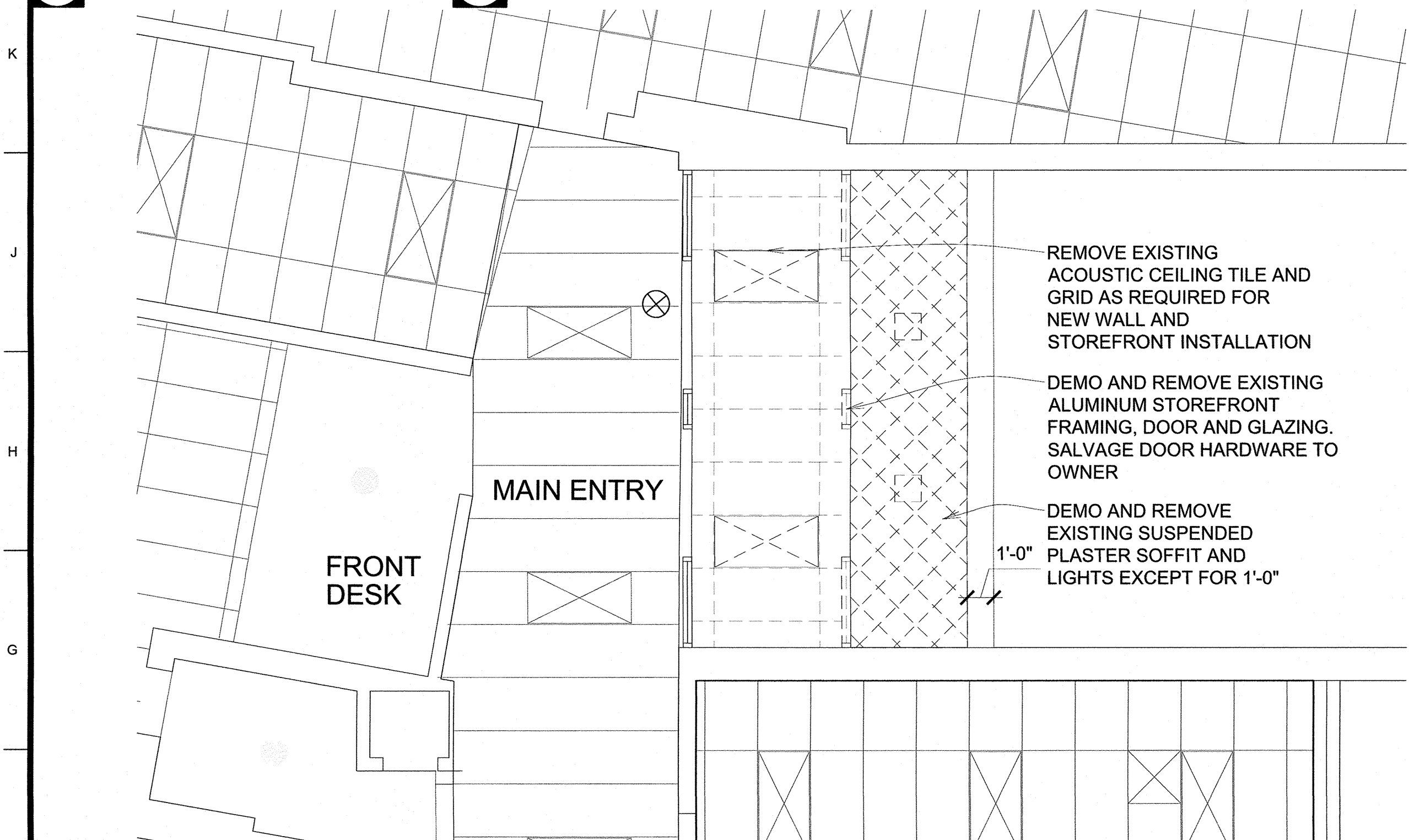
-

-

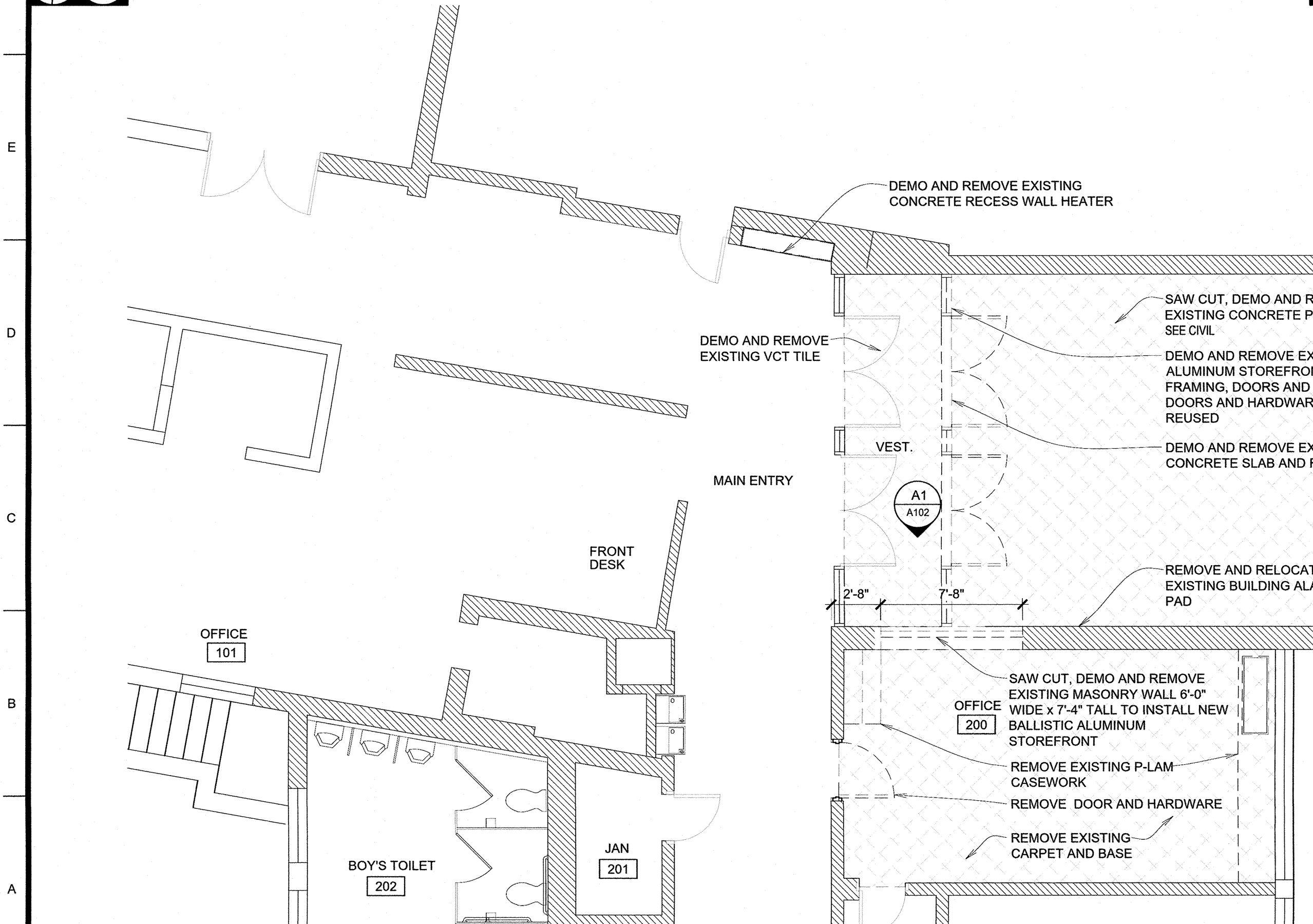
-

3

K1 SIGN DETAIL
SCALE: 3" = 1'-0"



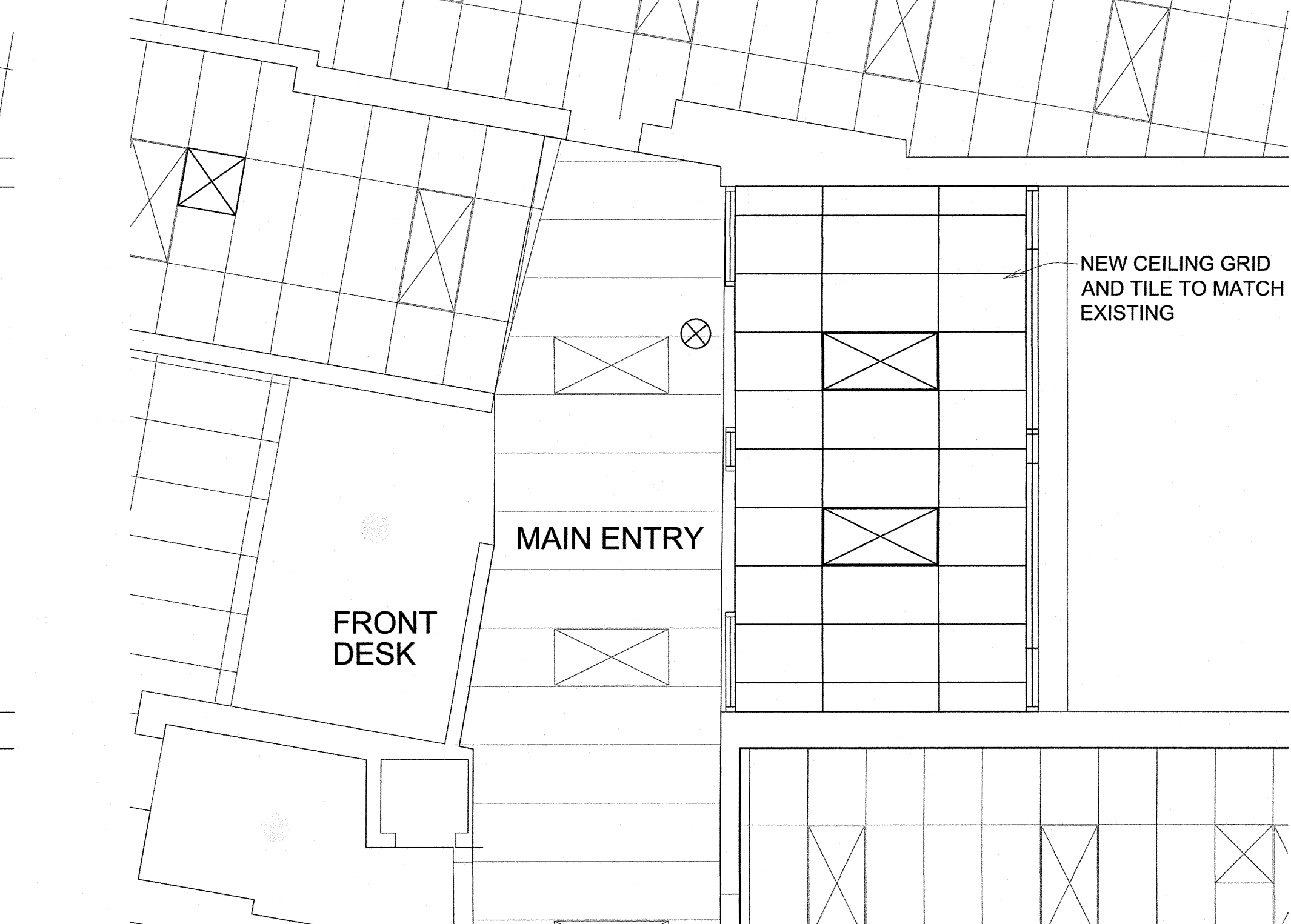
F1 DEMOLITION CEILING PLAN
SCALE: 3/16" = 1'-0"



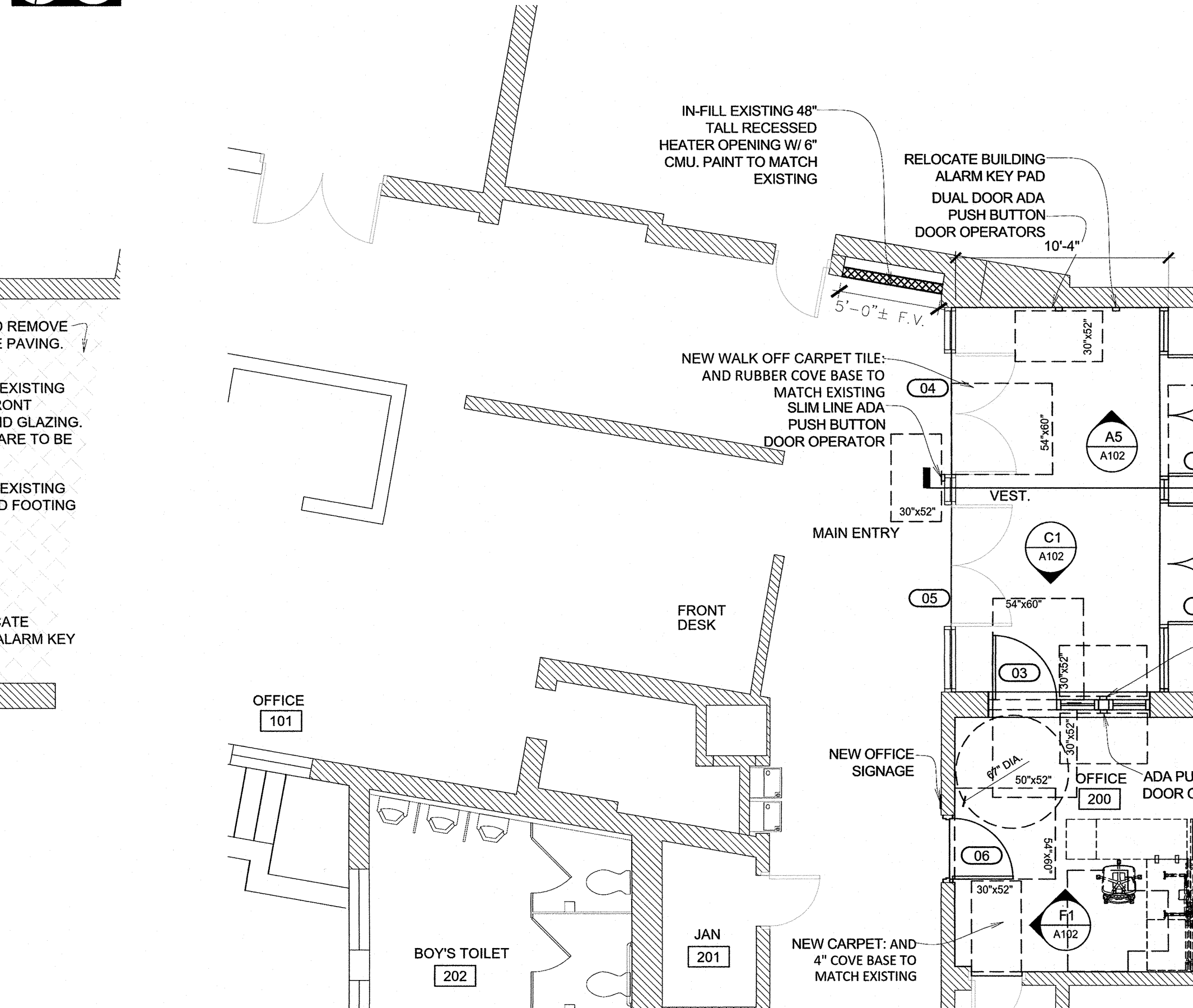
A1 PARTIAL DEMOLITION FLOOR PLAN
SCALE: 3/16" = 1'-0"



K3 TYPICAL SIGN MOUNTING DETAIL
SCALE: 1/4" = 1'-0"



F7 REFLECTED CEILING PLAN
SCALE: 3/16" = 1'-0"



A8 PARTIAL FLOOR PLAN
SCALE: 3/16" = 1'-0"



GENERAL FLOOR PLAN NOTES

- FIELD VERIFY ALL DIMENSIONS AND CONDITIONS PRIOR TO EXECUTING ANY WORK. NOTIFY ARCHITECT OF ANY DIMENSIONS OR WORK DIFFERING FROM THAT SHOWN, FOR CLARIFICATION BY THE ARCHITECT PRIOR TO PROCEEDING WITH WORK.
- VERIFY ALL ROUGH OPENINGS FOR DOORS, WINDOWS, EQUIPMENT, & OTHER "BUILT-IN" ITEMS PRIOR TO EXECUTION OF ANY WORK AFFECTED BY SAME.
- LOCATE DOOR OPENINGS WHICH ARE NOT DIMENSIONED OTHERWISE, CENTERED IN WALL AND 6" FROM FINISH WALL TO FINISH JAMB.
- DO NOT SCALE DRAWINGS - WHERE DIMENSIONAL DISCREPANCIES ARE ENCOUNTERED NOTIFY ARCHITECT PRIOR TO PROCEEDING WITH THE WORK.
- COORDINATE HEIGHTS OF OUTLETS & SWITCHING WITH ALL ARCHITECTURAL ITEMS. SEE M/E DRAWINGS FOR LOCATIONS.
- ALL WIRING CONCEALED OR IN CONDUIT IN SECURED / NON-PUBLIC SPACES PROVIDED AND INSTALLED BY OWNER.
- ALL ADA DOOR OPERATORS TO BE WIRELESS

GENERAL REF. CEILING PLAN NOTES

- FIELD VERIFY ALL DIMENSIONS AND CONDITIONS PRIOR TO EXECUTING ANY WORK. NOTIFY ARCHITECT OF ANY DIMENSIONS OR WORK DIFFERING FROM THAT SHOWN, FOR CLARIFICATION BY THE ARCHITECT PRIOR TO PROCEEDING WITH WORK.
- VERIFY ALL ROUGH OPENINGS FOR DOORS, WINDOWS, EQUIPMENT, & OTHER "BUILT-IN" ITEMS PRIOR TO EXECUTION OF ANY WORK AFFECTED BY SAME.
- DO NOT SCALE DRAWINGS - WHERE DIMENSIONAL DISCREPANCIES ARE ENCOUNTERED NOTIFY ARCHITECT PRIOR TO PROCEEDING WITH THE WORK.
- COORDINATE ALL LIGHT FIXTURES, EQUIPMENT, GRILL AND VENTS WITH MEP DRAWINGS.

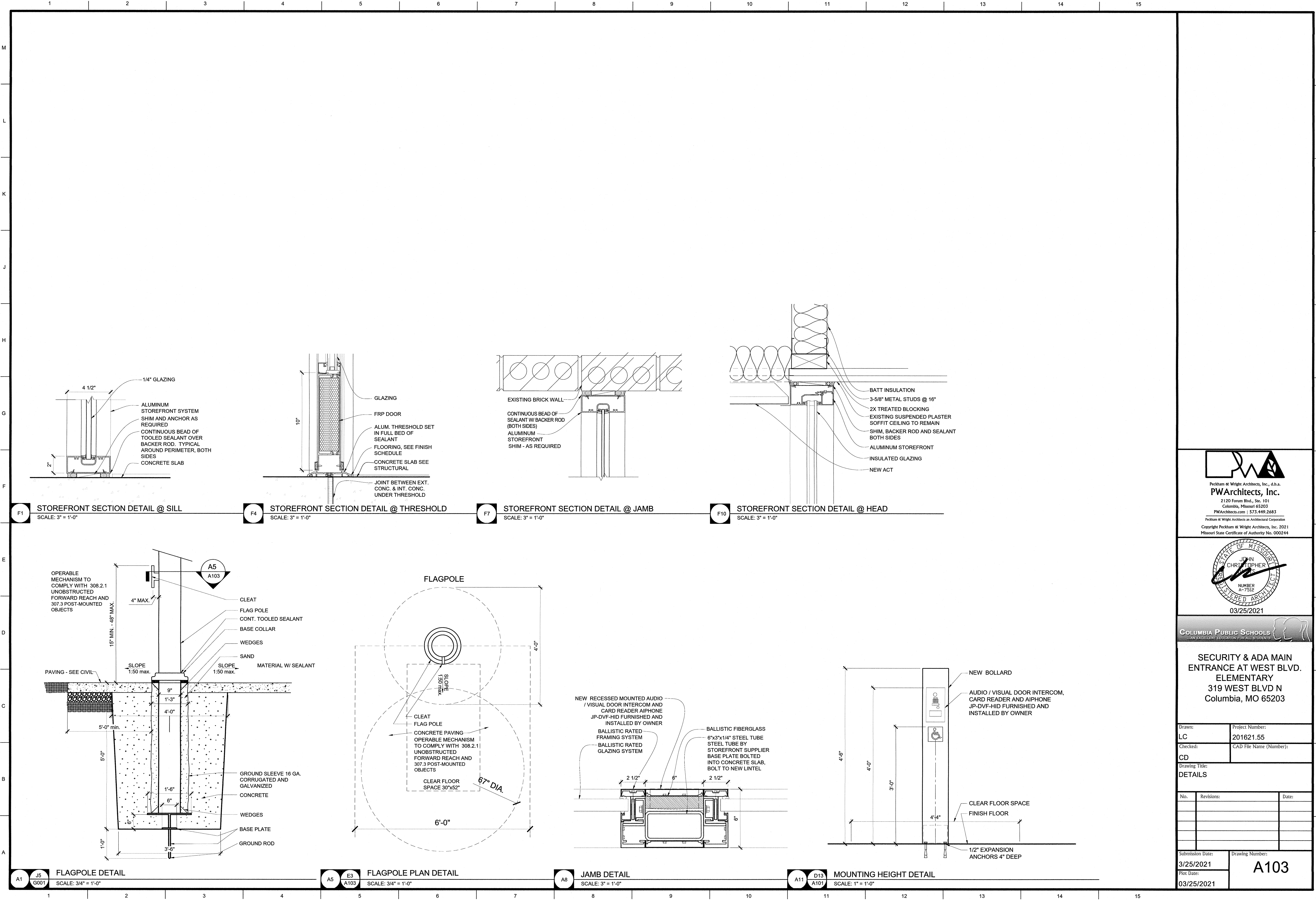
PWArchitects, Inc.
2120 Forum Blvd., Ste. 101
Columbia, Missouri 65203
PWArchitects.com | 573-449-2683
Pechham & Wright Architects, Inc. is an Architectural Corporation
Copyright Pechham & Wright Architects, Inc. 2021
Missouri State Certificate of Authority No. 000244

JOHN THOMPSON
REGISTERED ARCHITECT
NUMBER A-7512
03/25/2021

COLUMBIA PUBLIC SCHOOLS
AN EXCELLENT EDUCATION FOR ALL STUDENTS

SECURITY & ADA MAIN ENTRANCE AT WEST BLVD. ELEMENTARY
319 WEST BLVD N
Columbia, MO 65203

Drawn: LC
Checked: CD
Drawing Title: PLANS AND DOOR SCHEDULE
No. Revisions: Date:
Submission Date: 3/25/2021
Plot Date: 03/25/2021
Project Number: 201621.55
CAD File Name (Number):
Drawing Number: A101



PWArchitects, Inc.
2120 Forum Blvd., Ste. 101
Columbia, Missouri 65203
PWArchitects.com | 573.449.2683
Peckham & Wright Architects is an Architectural Corporation
Copyright Peckham & Wright Architects, Inc., 2021
Missouri State Certificate of Authority No. 000244

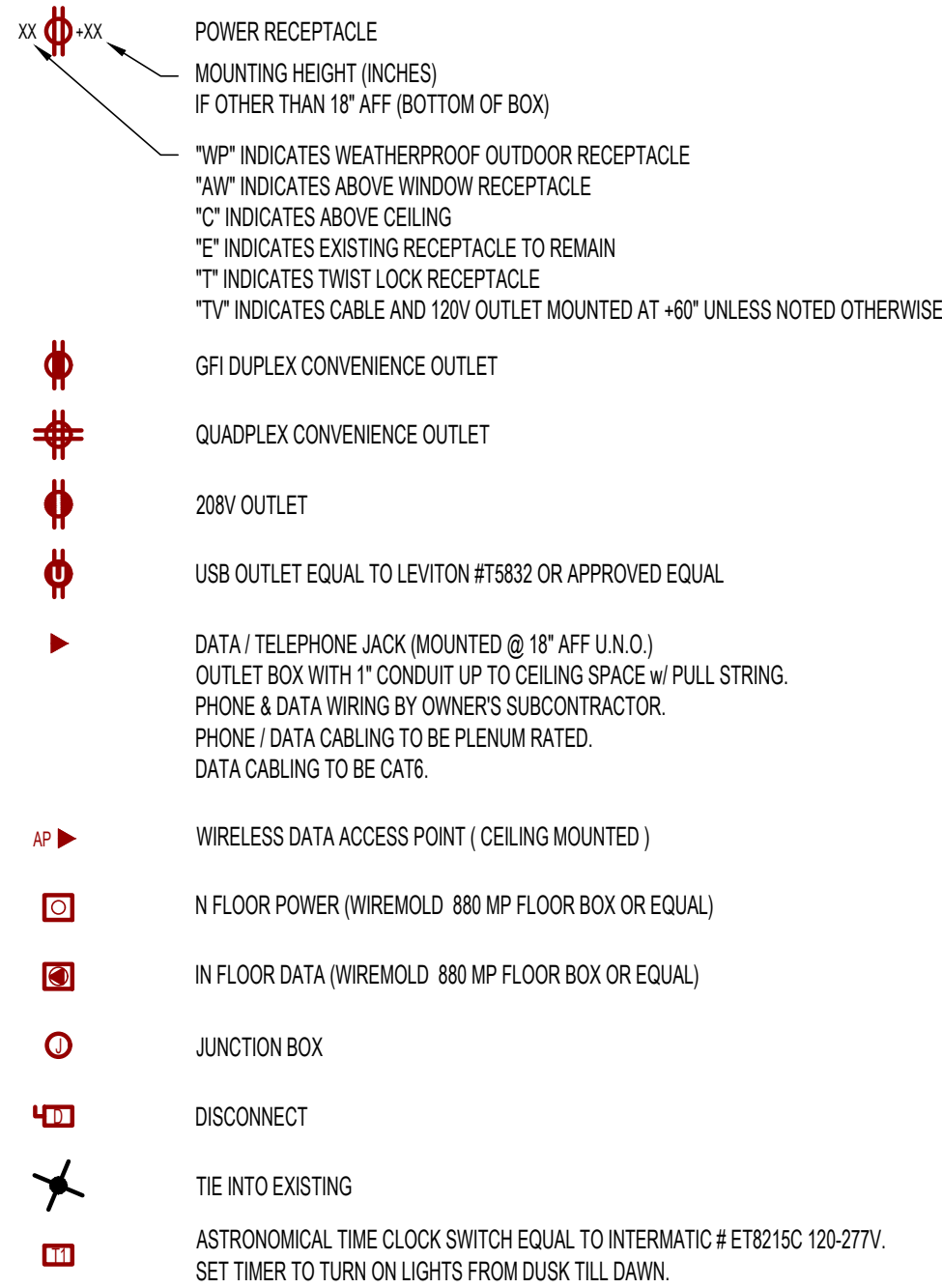
JOHN CHRISTOPHER
REGISTERED ARCHITECT
NUMBER A-7912
03/25/2021

COLUMBIA PUBLIC SCHOOLS
AN EXCELLENT EDUCATION FOR ALL STUDENTS

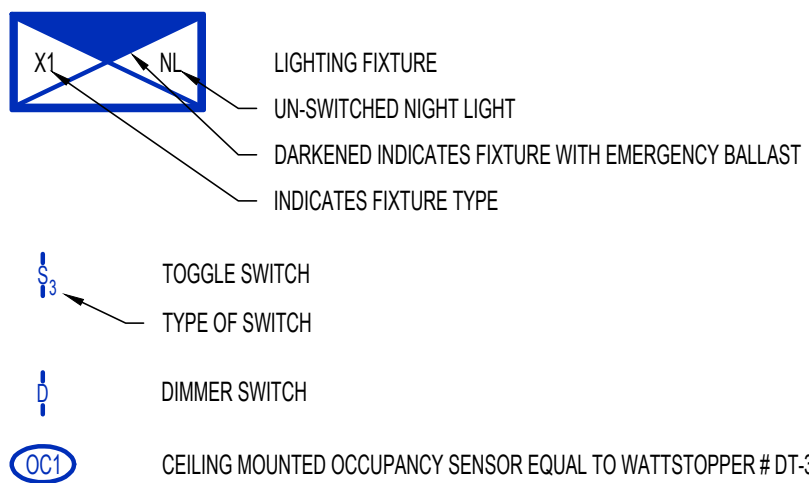
**SECURITY & ADA MAIN
ENTRANCE AT WEST BLVD.
ELEMENTARY**
319 WEST BLVD N
Columbia, MO 65203

Drawn:		Project Number:	
LC		201621.55	
Checked:		CAD File Name (Number):	
CD			
Drawing Title:			
DETAILS			
No.	Revisions:		Date:
Submission Date:		Drawing Number:	
3/25/2021		A103	
Plot Date:			
03/25/2021			

POWER SYMBOL LEGEND

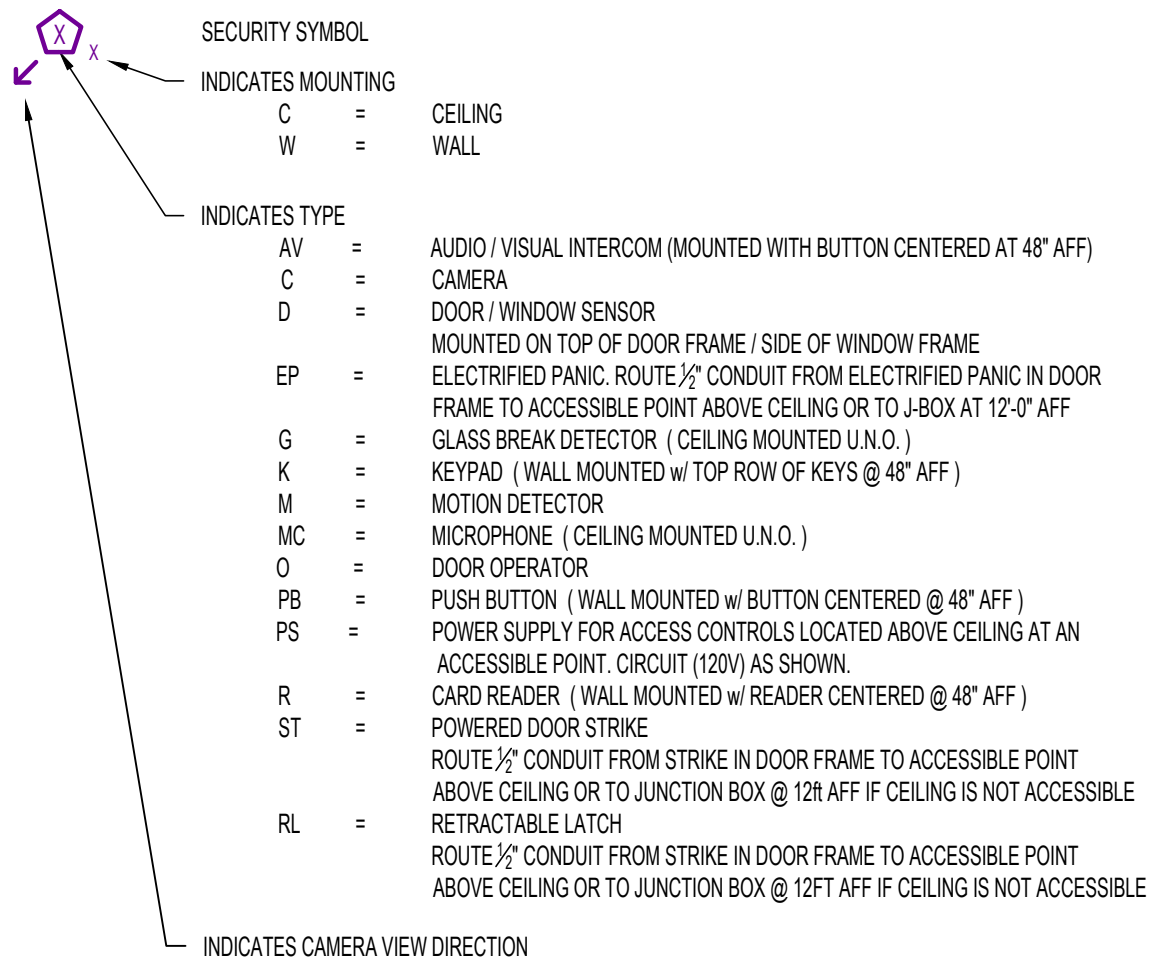


LIGHTING SYMBOL LEGEND



SECURITY SYMBOL KEY

NOTE: SYMBOLS LEGEND IS COMPREHENSIVE. SOME SYMBOLS OR VARIATIONS THEREOF MAY NOT BE USED ON PLANS.
MOUNTING HEIGHTS OF ALL ACCESSIBLE ACCESS CONTROL DEVICES SHALL BE PER ADA REQUIREMENTS LISTED BELOW
UNLESS NOTED OTHERWISE. MOUNTING HEIGHTS OF ALL OTHER DEVICES SHALL BE PER MANUFACTURER'S RECOMMENDATIONS.



BASED ON THE FOLLOWING CODES

2018	INTERNATIONAL MECHANICAL CODE
2018	INTERNATIONAL PLUMBING CODE
2018	INTERNATIONAL FUEL GAS CODE
2018	INTERNATIONAL FIRE CODE
2017	NATIONAL ELECTRIC CODE
2018	INTERNATIONAL ENERGY CONSERVATION CODE

LIGHTING SCHEDULE

MARK	MANUFACTURER*	MODEL NO.*	TYPE	VOLTS	AMPS	WATTS	LUMENS	CCT (*K)	CRI	LAMPS	MOUNTING	REMARKS
E	SURE-LITES	APCH7 UNV R	EM. LT/EXIT COMBO	120	0.17						WALL/CLG	INDICATES AP/W/1 REMOTE HEAD OVER EXT. DOORS
F	INVUE	VFS-K-B40-5-LED-E1-MSR-BZ + SF-BZ + ST-BZ	LED FLOOD LIGHT	120	0.56	67	5880	4000	70	LED	STANCHION	SEE "FLOODLIGHT MOUNTING DETAIL", WITH #VFS-VS VANDAL SHIELD
* OR EQUAL												

ELECTRICAL PANEL SCHEDULE

PANEL NO.								FFL
VOLTS:	208	MAIN CAPACITY:		225 MLO		*A' AMPS =		0
PHASE:	1	MOUNTING:		RECESSED		*B' AMPS =		0
WIRE:	SEE RISER	BUSS MATERIAL:		COPPER				
AIR:	SEE RISER	SQUARE D MODEL:		NQ				
CKT.	LOCATION/DESC.	BREAKER	AMPS	PH.	AMPS	BREAKER	LOCATION/DESC.	CKT.
1	BOYS TOILET / CUST. CLOSET	20-1		A		20-1	RM. 25	2
3	CORRIDOR SOUTH	20-1		B		20-1	RM. 25	4
5	3RD GRADE NORTH	20-1		A		20-1	PLUG IN OFFICE	6
7	TEACHER LOUNGE	20-1		B		20-1	SECURITY CAMERA	8
9	TEACHER LOUNGE	20-1		A		20-1	OFFICE	10
11	3RD GRADE SOUTH	20-1		B		20-1	CLINIC	12
13	3RD GRADE SOUTH	20-1		A		20-1	LOUNGE REF.	14
15	3RD GRADE SOUTH	20-1		B		20-1	LOUNGE REF.	16
17	4TH GRADE	20-1		A		20-1	LOUNGE REF.	18
19	RM. 25	20-1		B		20-1	SPARE	20
21	RM. 28	20-1		A		20-1	SPARE	22
23	5TH GRADE	20-1		B		20-1	SPARE	24
25	5TH GRADE	20-1		A		20-1	SPARE	26
27	5TH GRADE	20-1		B		20-1	SPARE	28
29	RM. 28	20-1		A		20-1	SPARE	30

NOTE: ELECTRICIAN TO VERIFY ALL EQUIPMENT POWER REQUIREMENTS PRIOR TO ANY EQUIPMENT & BREAKER PURCHASE OR INSTALLATION.

ELECTRICAL PANEL SCHEDULE

PANEL NO.								FFR
VOLTS:	208	MAIN CAPACITY:		225 MLO		*A' AMPS =		11
PHASE:	1	MOUNTING:		RECESSED		*B' AMPS =		9.7
WIRE:	SEE RISER	BUSS MATERIAL:		COPPER				
AIR:	SEE RISER	SQUARE D MODEL:		NQ				
CKT.	LOCATION/DESC.	BREAKER	AMPS	PH.	AMPS	BREAKER	LOCATION/DESC.	CKT.
1	OLD TEACHER LOUNGE RM. 22	20-1		A		20-1	VERIFY	2
3	2ND GRADE WEST	20-1		B		20-1	VERIFY	4
5	2ND GRADE WEST	20-1		A		20-1	VERIFY	6
7	2ND GRADE WEST	20-1		B		20-1	VERIFY	8
9	OUTSIDE LIGHTS	20-1		A		20-1	VERIFY	10
11	WEST CORRIDOR	20-1		B		20-1	FIRE ALARM SNAC RM 24	12
13	RM 25 LEFT	20-1		A		20-1	FIRE ALARM SNAC RM 24	14
15	RM 25 CENTER LEFT	20-1		B		20-2	PRINCIPAL A/C	16
17	RM 25 CENTER RIGHT	20-1		A		\	\	18
19	RM 25 RIGHT	20-1		B		60-2	60 AMP BREAKER	20
21	TEACHER ROOM	20-1		A		\	\	22
23	LOBBY LIGHTS	20-1		B	0.7	20-1	STEAM CABINET HEATER CH-1	24
25	CLOCKS / BELL	20-1		A	1	20-1	STEAM CABINET HEATER CH-2	26
27	FIRE ALARM	20-1		B	9	20-1	OFFICE RECEPTACLES	28
29	GIRLS TOILET	20-1		A	10	20-1	DOOR OPERATORS	30

NOTE: ELECTRICIAN TO VERIFY ALL EQUIPMENT POWER REQUIREMENTS PRIOR TO ANY EQUIPMENT & BREAKER PURCHASE OR INSTALLATION.

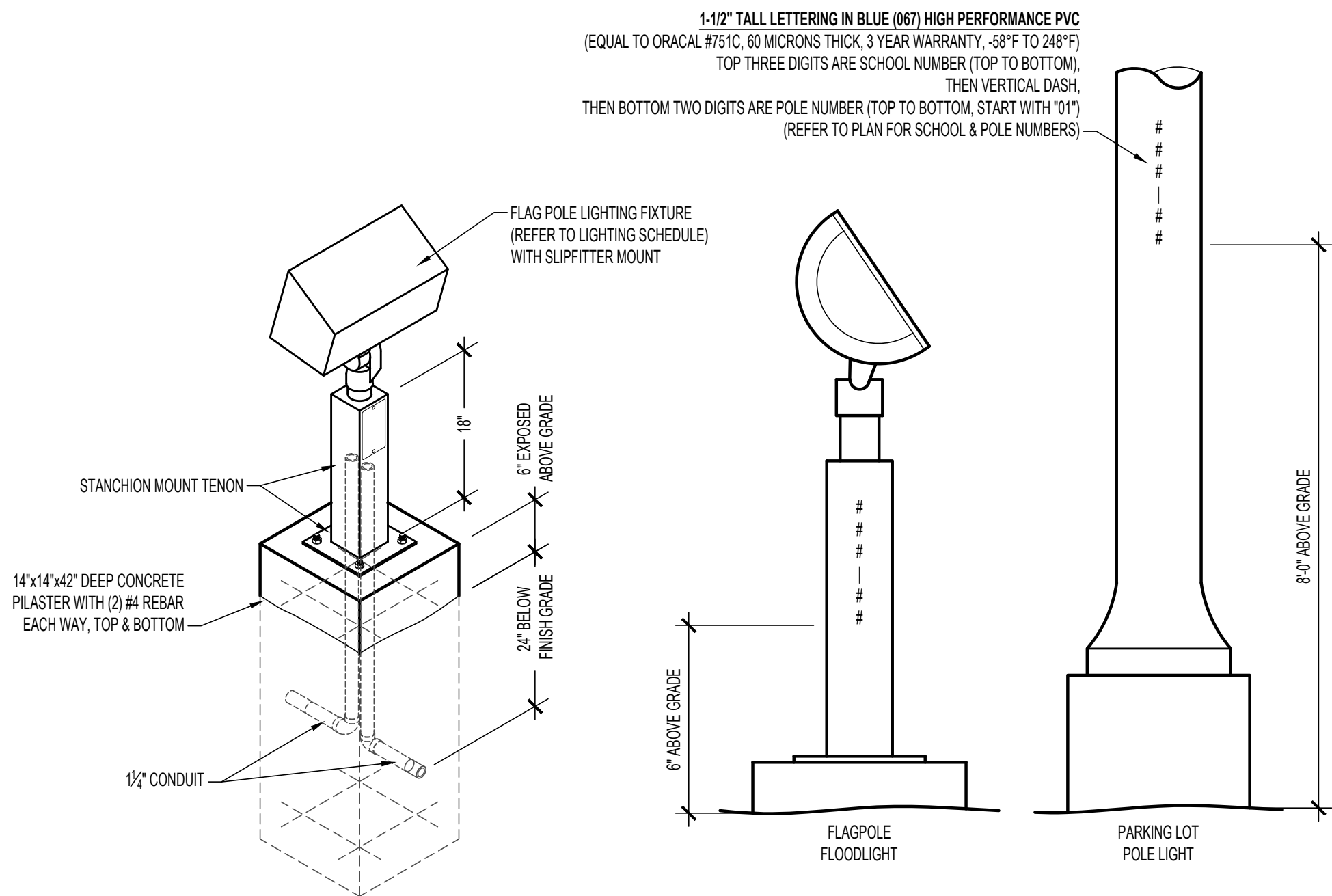
GENERAL MECHANICAL-ELECTRICAL-PLUMBING SPECIFICATIONS

- ALL WORK SHALL BE DONE IN STRICT CONFORMANCE WITH THE LOCAL BUILDING CODES.
- ALL MATERIALS SHALL BE NEW, FIRST CLASS, AND INSTALLED TO MANUFACTURER'S WRITTEN SPECIFICATIONS.
- ALL SYSTEMS SHALL BE COMPLETE AND OPERABLE IN EVERY WAY.
- DO ALL EXCAVATION, BACK FILLING, CUTTING, PATCHING, OFFSETTING, ADJUSTING, AND BALANCING AS REQUIRED TO COMPLETE THE JOB.
- SPECIFIC MODELS ARE SPECIFIED TO ESTABLISH QUALITY ONLY. SUBSTITUTIONS MAY BE MADE WITH ENGINEER'S APPROVAL.
- GUARANTEE ALL WORKMANSHIP AND MATERIALS FOR ONE YEAR FROM FINAL ACCEPTANCE. PROVIDE FIVE YEAR AIR CONDITIONING COMPRESSOR WARRANTY.
- INSPECT JOB SITE PRIOR TO BIDDING TO DETERMINE EXACT JOB REQUIREMENTS. SEE ARCHITECTURAL DRAWINGS FOR CONSTRUCTION DETAILS.
- ARCHITECTURAL DRAWING DIMENSIONS SHALL GOVERN IN ALL CASES. COORDINATE ENGINEERING DRAWINGS WITH ARCHITECTURAL DRAWINGS FOR ALL EQUIPMENT LAYOUTS AND LOCATIONS.
- LAYOUTS AND ROUTINGS SHOWN ON THE PLANS ARE APPROXIMATE AND GENERAL IN NATURE. CONTRACTORS ARE REQUIRED TO INSPECT THE JOBSITE FOR INTERFERENCES, OBSTRUCTIONS, AND CONFLICTS AND NOTIFY THE ENGINEER OF THE SAME, AND INCLUDE IN THEIR BID AND WORK SCOPE ALL ASSOCIATED COSTS TO MODIFY THE LAYOUTS AND ROUTINGS AS NECESSARY TO ACCOMMODATE THE INSTALLATION OF THEIR WORK AROUND SUCH INTERFERENCES, OBSTRUCTIONS, AND CONFLICTS.
- CONTRACTOR IS TO INCLUDE COSTS FOR ALL PERMITS, INSPECTIONS, TAPS, METERS & FUEL ASSOCIATED WITH HIS WORK.
- CONTRACTOR IS RESPONSIBLE FOR REVIEWING AND UNDERSTANDING ALL DRAWINGS AND ASPECTS OF THE PROJECT SCOPE, AND FOR INCLUDING IN HIS BID ALL WORK ASSOCIATED WITH HIS TRADE, REGARDLESS OF WHICH DRAWING OR SHEET IT IS SHOWN ON.

ELECTRICAL SPECIFICATIONS

- ALL CONDUCTORS SHALL BE THIN COPPER ABOVE GRADE, XHHW-2 BELOW GRADE, MINIMUM #12 OR LARGER AS REQUIRED OR SHOWN.
- ALL SERVICE WIRING, EXPOSED TO WEATHER, OR WIRING BELOW GRADE, SHALL BE IN RIGID GALVANIZED CONDUIT OR SCH. 40 PVC.
- ALL OTHER WIRING SHALL BE IN EMT, SCHEDULE 40 PVC, OR MC CABLE, UNLESS PROTECTED AND ENCLOSED WITHIN BUILDING MATERIALS, IN WHICH CASE TYPE NM CABLE MAY BE USED.
- WALL SWITCHES SHALL BE LEVITON #Q5120 SERIES, OR APPROVED EQUAL. 20A. COLOR SHALL BE DETERMINED BY ARCHITECT. DIMMER SWITCHES SHALL BE SELECTED BY CONTRACTOR TO BE COMPATIBLE WITH LIGHT FIXTURES PROVIDED. COLOR SHALL BE DETERMINED BY ARCHITECT.
- DUPLEX RECEPTACLES SHALL BE TAMPER RESISTANT LEVITON #T580 SERIES, OR APPROVED EQUAL. 20A. GROUNDING, MATCHING COVER PLATE, COLOR AS DETERMINED BY ARCHITECT. USE SIDE WIRING ONLY.
- ARC-FAULT CIRCUIT INTERRUPTER BREAKERS SHALL BE COMBINATION TYPE BY SQUARE D, AND SHALL HAVE A DEDICATED NEUTRAL WIRE THROUGHOUT THE CIRCUIT.
- THE ENTIRE SYSTEM SHALL BE ELECTRICALLY CONTINUOUS AND PROPERLY GROUNDED. EVERY FEEDER AND BRANCH CONDUIT SHALL HAVE CODE SIZED GREEN INSULATED GROUND CONDUCTOR.
- FURNISH AND INSTALL ALL LIGHTING FIXTURES, LAMPS, FUSES, BREAKERS, ETC. TO COMPLETE THE BRANCH CIRCUITS INDICATED.
- ALL 120V, 20A LIGHTING AND RECEPTACLE CIRCUITS REQUIRING MORE THAN 100' OF CONDUCTORS (ONE WAY) SHALL BE #10 CONDUCTORS, MINIMUM.
- PROVIDE TYPEWRITTEN BREAKER SCHEDULE IN EACH PANELBOARD INDICATING ITEMS AND DEVICES SERVED BY ALL BREAKERS IN EACH PANEL.
- PERMANENTLY LABEL DISCONNECTS FOR HVAC EQUIPMENT WITH EQUIPMENT SERVED, AND PANEL AND CIRCUIT NUMBER.
- UNDERGROUND SPLICES TO BE MADE WITH DEVICES RATED FOR THAT APPLICATION.
- ALL ELECTRICAL PANELS AND DISCONNECTS SHALL HAVE A PERMANENT ARC-FLASH LABEL AFFIXED PER NEC 110.16.
- ROUGH-IN FOR TEMPERATURE CONTROLS SHALL BE BY ELECTRICAL CONTRACTOR. REFER TO MECHANICAL PLANS AND DETAILS.

CABINET HEATER SCHEDULE										
MARK	DESCRIPTION	MFR/MODEL	TYPE	CFM	HEATING KBTU	ELECTRICAL			PHYSICAL	
						VOLTS	AMPS	MAX CKT	DIN'S (LxW)	WEIGHT
CH-1	CABINET HEATER	MODINE CW-002	CEILING RECESSED	280	19.8	120	0.7	20	39x25	85
CH-2	CABINET HEATER	MODINE CW-004	FLOOR MOUNT	450	42.5	120	1.0	20	49x25	105
HVAC NOTES: 1) WITH INTEGRAL DISCONNECT. 2) WITH STEAM CONTROL VALVE, FAN RELAY, RETURN AIR TEMPERATURE SENSOR AND SPACE TEMPERATURE SENSOR CONNECTED TO BAS. 3) WITH RECESSED CEILING FLANGE KIT.										

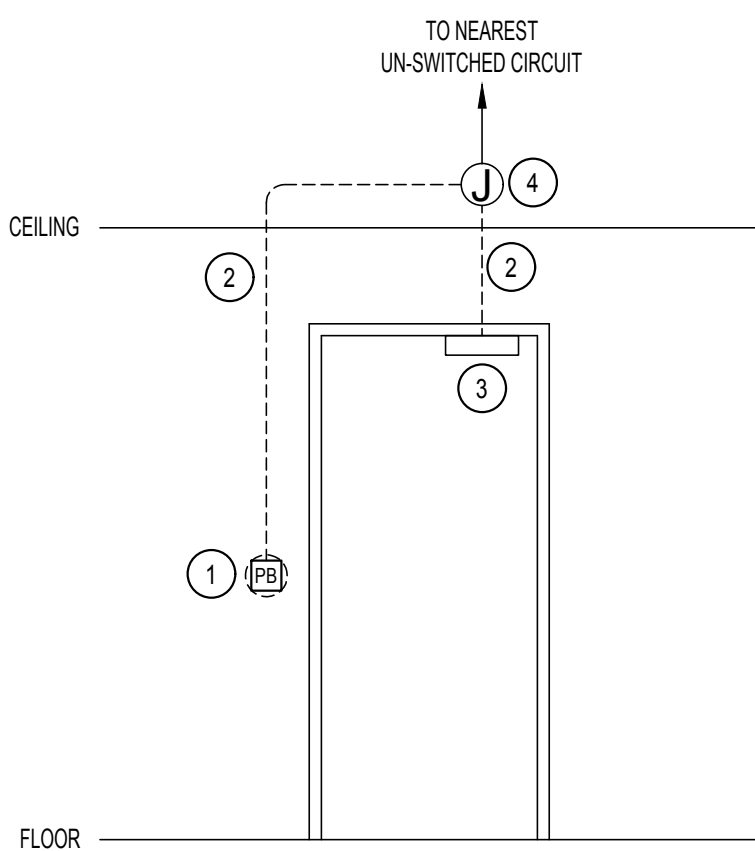
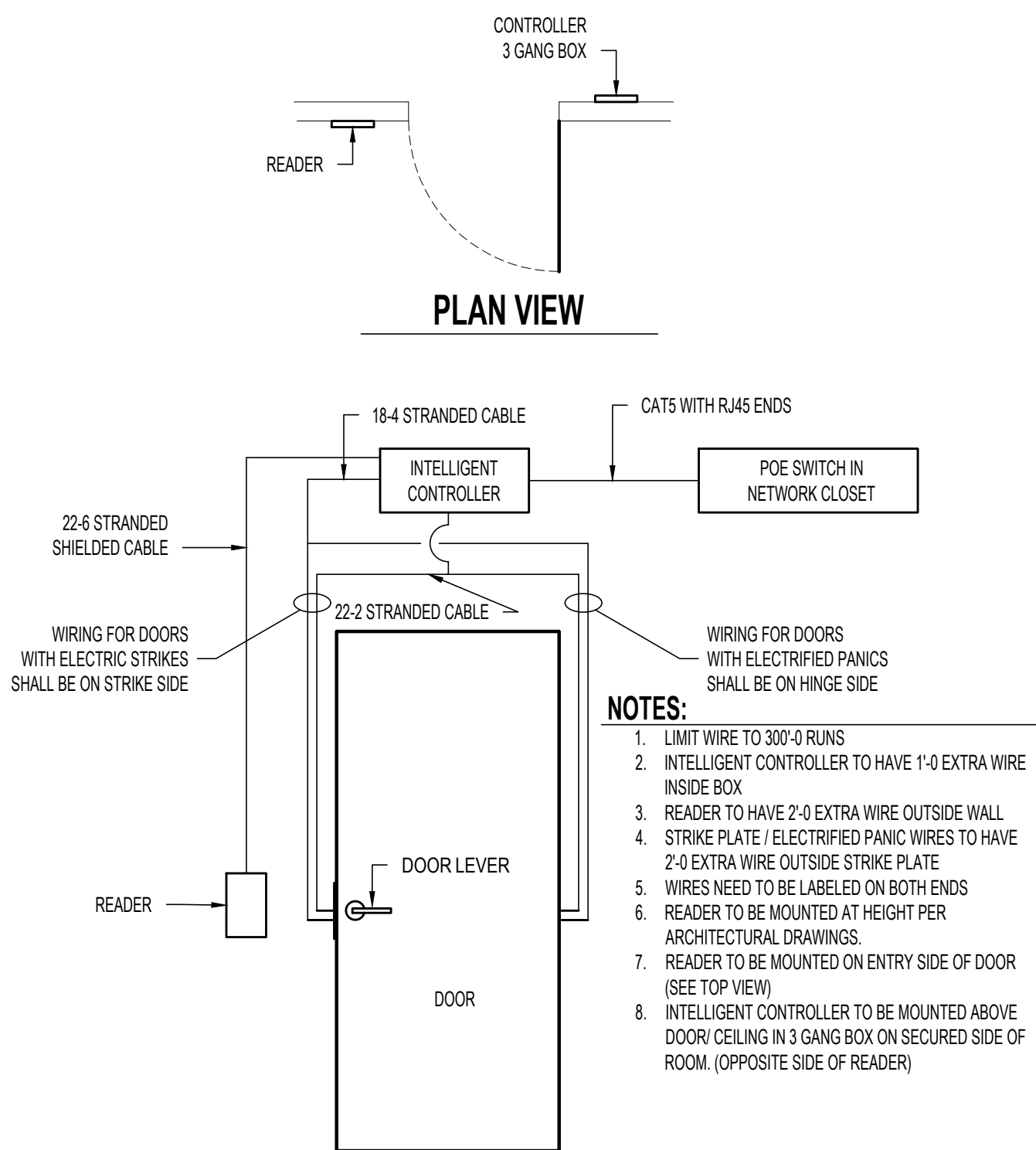


FLOODLIGHT MOUNTING DETAIL

CPS SITE LIGHTING LABELING DETAIL

KEYED NOTES:

- J-BOX & ADA PUSH BUTTON MOUNTED @ 42" A.F.F. UNLESS NOTED OTHERWISE ON ARCHITECTURAL PLANS.
- 1/2" EMT CONDUIT WITH LOW VOLTAGE CONDUCTORS (SIZE PER OPENER MANUFACTURER'S INSTRUCTIONS). TERMINATE AT PUSH BUTTONS AND AT DOOR OPENER/CONTROLLER.
- DOOR OPENER/CONTROLLER LOCATED ON DOOR JAMB OR ON DOOR (CONFIRM WITH ARCHITECT/SUPPLIER).
- J-BOX ABOVE CEILING OR BEHIND DOOR OPENER/CONTROLLER (CONFIRM WITH ARCHITECT/SUPPLIER). CONNECT TO OPENER/CONTROLLER WITH MC CABLE WITH ADEQUATE SLACK TO ALLOW DOOR OPERATION WITHOUT STRAINING CABLE.

AUTOMATIC DOOR OPERATOR
WIRING SCHEMATIC

ACCESS CONTROL DETAIL



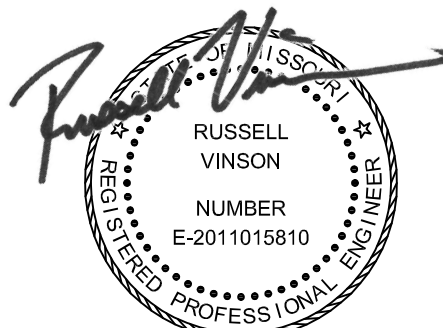
Peckham & Wright Architects, Inc., d.b.a.
PWArchitects, Inc.
2120 Forum Blvd, Suite 101
Columbia, Missouri 65203
PWArchitects.com | 573.449.2683
Peckham & Wright Architects an Architectural Corporation



A Custom Engineering Company

912 Old 63 South Columbia, MO 65201
ph: 573.875.4365

THE PROFESSIONAL ENGINEER'S SEAL ON THIS DRAWING HAS BEEN AFFIXED IN ACCORDANCE WITH THE REQUIREMENTS OF CHAPTER 327, RSMO. IN AFFIXING THIS SEAL THE ENGINEER TAKES RESPONSIBILITY FOR THE WORK SHOWN ON THIS DRAWING ONLY, AND HEREBY DISCLAIMS ANY AND ALL RESPONSIBILITY FOR OTHER PROJECT DRAWINGS NOT DIRECTLY BEARING THIS SEAL.



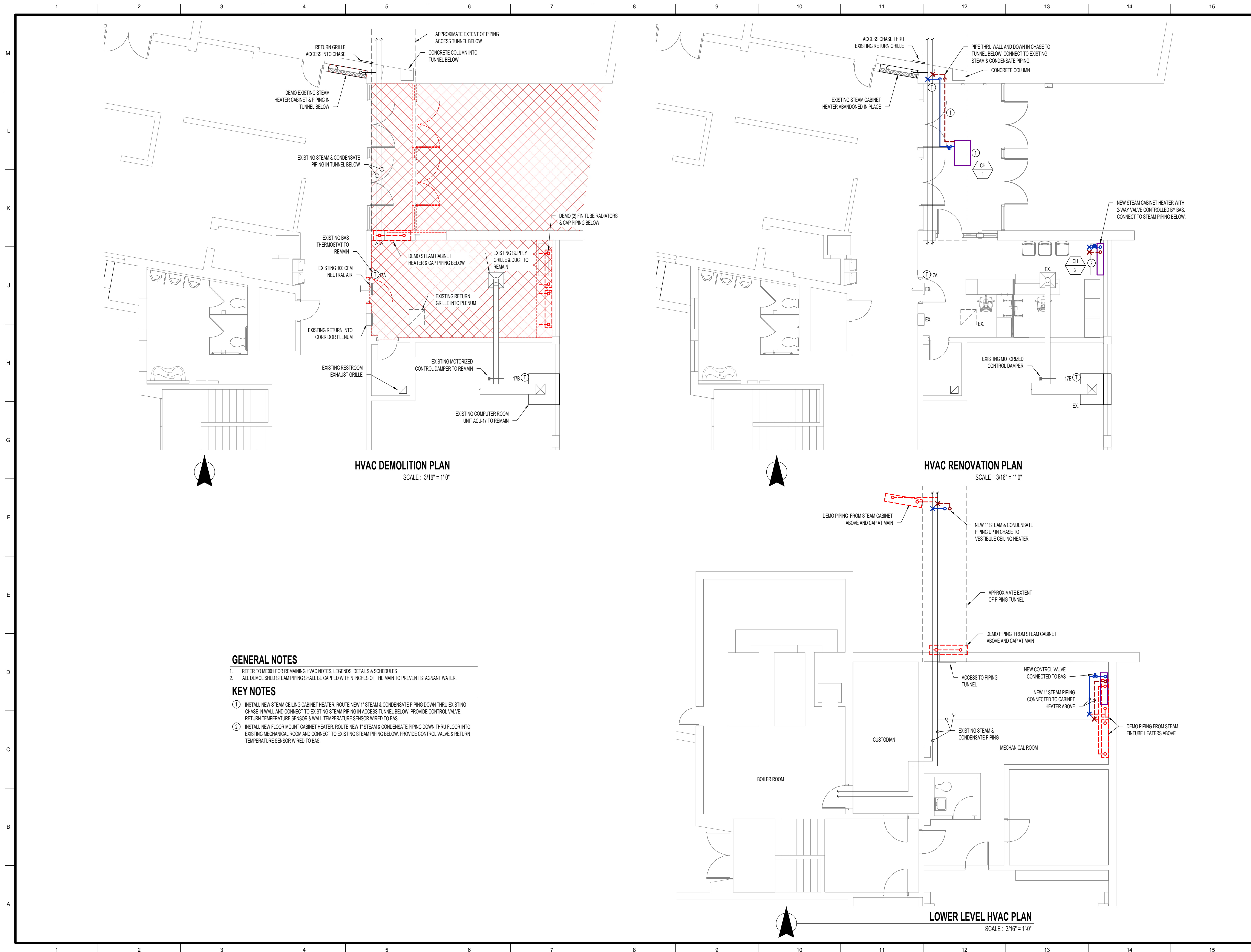
MARCH 25th, 2021

RUSSELL VINSON, P.E. PE-2011015810
CERTIFICATE OF AUTHORITY
TO OFFER ENGINEERING SERVICES
CUSTOM ENGINEERING, INC.
CERTIFICATE OF AUTHORITY #: 000239

COLUMBIA PUBLIC SCHOOLS
...AN EXCELLENT EDUCATION FOR ALL STUDENTS

**SECURITY & ADA MAIN
ENTRANCE AT WEST BLVD.
ELEMENTARY**
319 WEST BLVD N
Columbia, MO 65203

Drawn:		TE Project Number:	
RV		21013	
Checked:		PWA Project Number:	
RV		201621.54	
Drawing Title:			
MECHANICAL ELECTRICAL DETAILS & SCHEDULES			
No.	Revisions:		Date:
	100% CD PERMIT & BID		03/25/2021
Submission Date:		Drawing Number:	
03/25/2021		ME001	
Plot Date:			
03/23/2021			

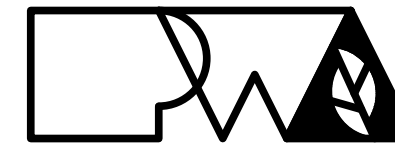


GENERAL NOTES

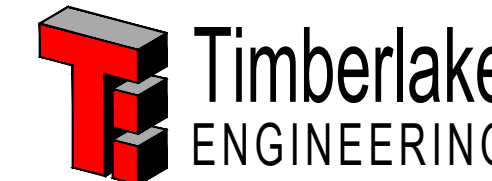
1. REFER TO ME001 FOR REMAINING HVAC NOTES, LEGENDS, DETAILS & SCHEDULES
2. ALL DEMOLISHED STEAM PIPING SHALL BE CAPPED WITHIN INCHES OF THE MAIN TO PREVENT STAGNANT WATER.

KEY NOTES

- ① INSTALL NEW STEAM CEILING CABINET HEATER. ROUTE NEW 1" STEAM & CONDENSATE PIPING DOWN THRU EXISTING CHASE IN WALL AND CONNECT TO EXISTING STEAM PIPING IN ACCESS TUNNEL BELOW. PROVIDE CONTROL VALVE, RETURN TEMPERATURE SENSOR & WALL TEMPERATURE SENSOR WIRED TO BAS.
- ② INSTALL NEW FLOOR MOUNT CABINET HEATER. ROUTE NEW 1" STEAM & CONDENSATE PIPING DOWN THRU FLOOR INTO EXISTING MECHANICAL ROOM AND CONNECT TO EXISTING STEAM PIPING BELOW. PROVIDE CONTROL VALVE & RETURN TEMPERATURE SENSOR WIRED TO BAS.



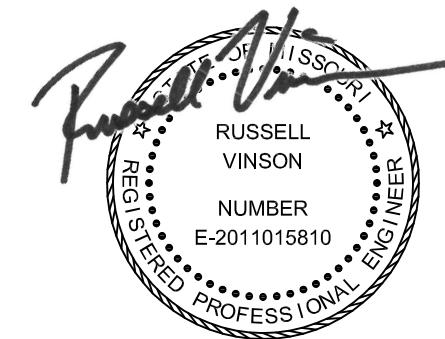
Peckham & Wright Architects, Inc., d.b.a.
PWArchitects, Inc.
2120 Forum Blvd, Suite 101
Columbia, Missouri 65203
PWArchitects.com | 573.449.2683
Peckham & Wright Architects an Architectural Corporation



A Custom Engineering Company

912 Old 63 South Columbia, MO 65201
ph: 573.875.4365

THE PROFESSIONAL ENGINEER'S SEAL ON THIS DRAWING HAS BEEN AFFIXED IN ACCORDANCE WITH THE REQUIREMENTS OF CHAPTER 327, RSMO. IN AFFIXING THIS SEAL THE ENGINEER TAKES RESPONSIBILITY FOR THE WORK SHOWN ON THIS DRAWING ONLY, AND HEREBY DISCLAIMS ANY AND ALL RESPONSIBILITY FOR OTHER PROJECT DRAWINGS NOT DIRECTLY BEARING THIS SEAL.



MARCH 25th, 2021

RUSSELL VINSON, P.E. PE-2011015810
CERTIFICATE OF AUTHORITY
TO OFFER ENGINEERING SERVICES
CUSTOM ENGINEERING, INC.
CERTIFICATE OF AUTHORITY #: 000239

COLUMBIA PUBLIC SCHOOLS
...AN EXCELLENT EDUCATION FOR ALL STUDENTS

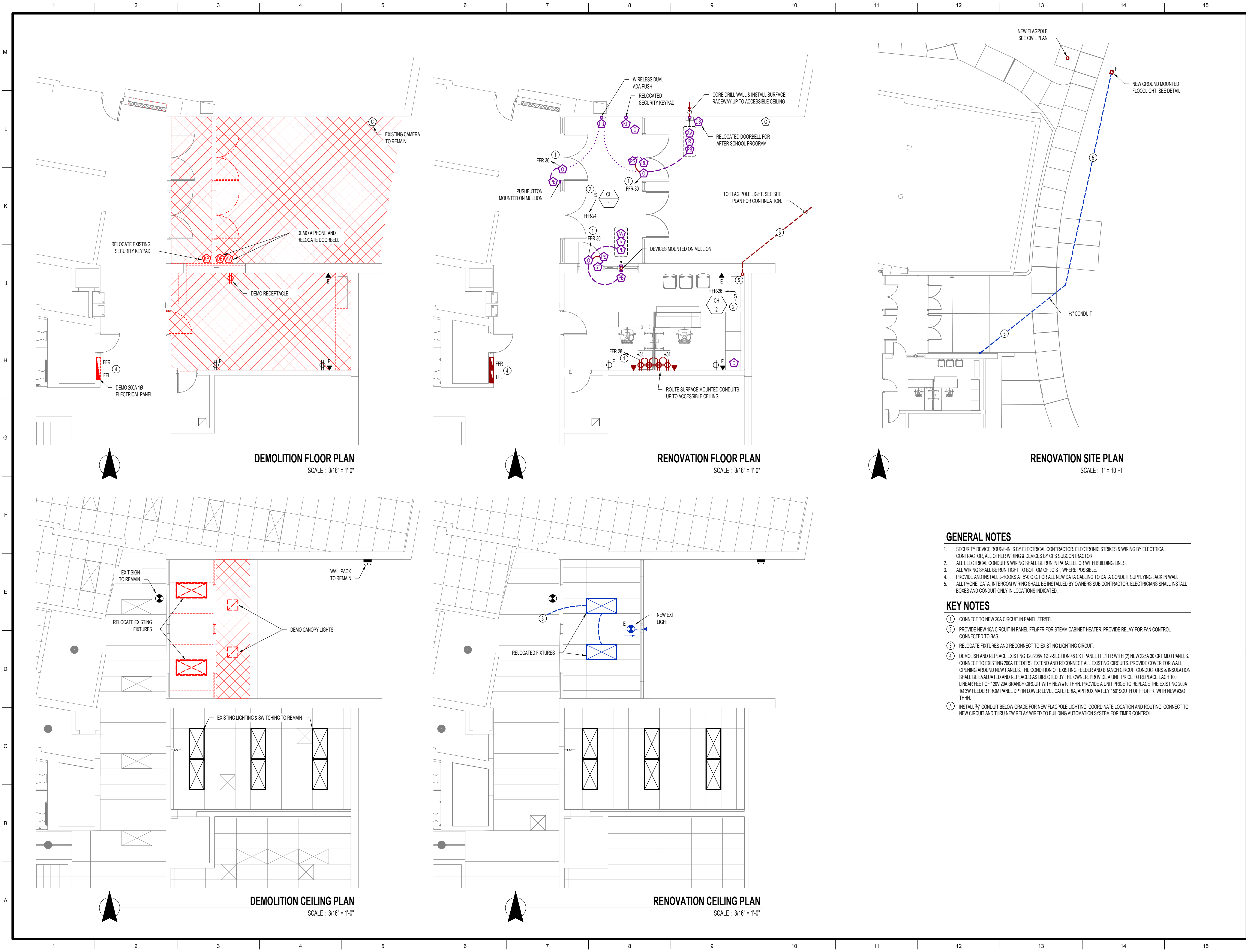
**SECURITY & ADA MAIN
ENTRANCE AT WEST BLVD.
ELEMENTARY**
319 WEST BLVD N
Columbia, MO 65203

Drawn:	TE Project Number:
RV	21013
Checked:	PWA Project Number:
RV	201621.54

Drawing Title:
HVAC PLAN

No.	Revisions:	Date:
	100% CD PERMIT & BID	03/25/2021

Submission Date:	Drawing Number:
03/25/2021	ME100
Plot Date:	
03/23/2021	



GENERAL NOTES

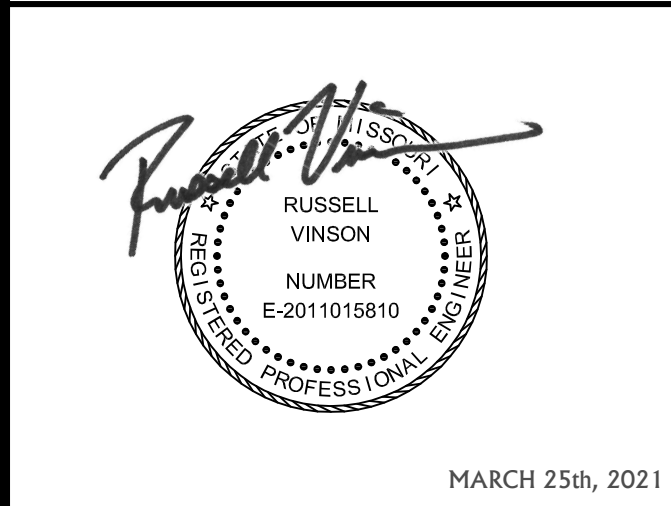
1. SECURITY DEVICE ROUGH-IN IS BY ELECTRICAL CONTRACTOR. ELECTRONIC STRIKES & WIRING BY ELECTRICAL CONTRACTOR. ALL OTHER WIRING & DEVICES BY CPS SUBCONTRACTOR.
2. ALL ELECTRICAL CONDUIT & WIRING SHALL BE RUN IN PARALLEL OR WITH BUILDING LINES.
3. ALL WIRING SHALL BE RUN TIGHT TO BOTTOM OF JOIST, WHERE POSSIBLE.
4. PROVIDE AND INSTALL J-HOOKS AT 5'-0" O.C. FOR ALL NEW DATA CABLING TO DATA CONDUIT SUPPLYING JACK IN WALL.
5. ALL PHONE, DATA, INTERCOM WIRING SHALL BE INSTALLED BY OWNERS SUB CONTRACTOR. ELECTRICIANS SHALL INSTALL BOXES AND CONDUIT ONLY IN LOCATIONS INDICATED.

KEY NOTES

- ① CONNECT TO NEW 20A CIRCUIT IN PANEL FFR/FLL.
- ② PROVIDE NEW 15A CIRCUIT IN PANEL FFL/FFR FOR STEAM CABINET HEATER. PROVIDE RELAY FOR FAN CONTROL CONNECTED TO BAS.
- ③ RELOCATE FIXTURES AND RECONNECT TO EXISTING LIGHTING CIRCUIT.
- ④ DEMOLISH AND REPLACE EXISTING 120/208V 10 2 SECTION 48 CKT PANEL FFL/FFR WITH (2) NEW 225A 30 CKT MLO PANELS. CONNECT TO EXISTING 200A FEEDERS. EXTEND AND RECONNECT ALL EXISTING CIRCUITS. PROVIDE COVER FOR WALL OPENING AROUND NEW PANELS. THE CONDITION OF EXISTING FEEDER AND BRANCH CIRCUIT CONDUCTORS & INSULATION SHALL BE EVALUATED AND REPLACED AS DIRECTED BY THE OWNER. PROVIDE A UNIT PRICE TO REPLACE EACH 100 LINEAR FEET OF 120V 20A BRANCH CIRCUIT WITH NEW #10 THHN. PROVIDE A UNIT PRICE TO REPLACE THE EXISTING 200A 10 3W FEEDER FROM PANEL DP1 IN LOWER LEVEL CAFETERIA, APPROXIMATELY 150' SOUTH OF FFL/FFR, WITH NEW #3/0 THHN.
- ⑤ INSTALL 3/4" CONDUIT BELOW GRADE FOR NEW FLAGPOLE LIGHTING. COORDINATE LOCATION AND ROUTING. CONNECT TO NEW CIRCUIT AND THRU NEW RELAY WIRED TO BUILDING AUTOMATION SYSTEM FOR TIMER CONTROL.



THE PROFESSIONAL ENGINEER'S SEAL ON THIS DRAWING HAS BEEN AFFIXED IN ACCORDANCE WITH THE REQUIREMENTS OF CHAPTER 327, RSMO. IN AFFIXING THIS SEAL THE ENGINEER TAKES RESPONSIBILITY FOR THE WORK SHOWN ON THIS DRAWING ONLY, AND HEREBY DISCLAIMS ANY AND ALL RESPONSIBILITY FOR OTHER PROJECT DRAWINGS NOT DIRECTLY BEARING THIS SEAL.



RUSSELL VINSON, P.E. PE-2011015810
CERTIFICATE OF AUTHORITY
TO OFFER ENGINEERING SERVICES
CUSTOM ENGINEERING, INC.
CERTIFICATE OF AUTHORITY #: 000239



**SECURITY & ADA MAIN
ENTRANCE AT WEST BLVD.
ELEMENTARY**
319 WEST BLVD N
Columbia, MO 65203

Drawn:	TE Project Number:	
RV	21013	
Checked:	PWA Project Number:	
RV	201621.54	
Drawing Title:		
ELECTRICAL PLAN		
No.	Revisions:	Date:
	100% CD PERMIT & BID	03/25/2021
Submission Date:		Drawing Number:
03/25/2021		ME101
Plot Date:		
03/23/2021		